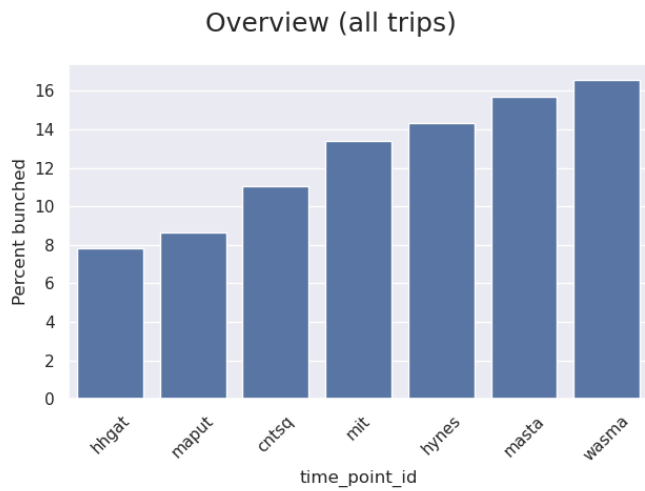
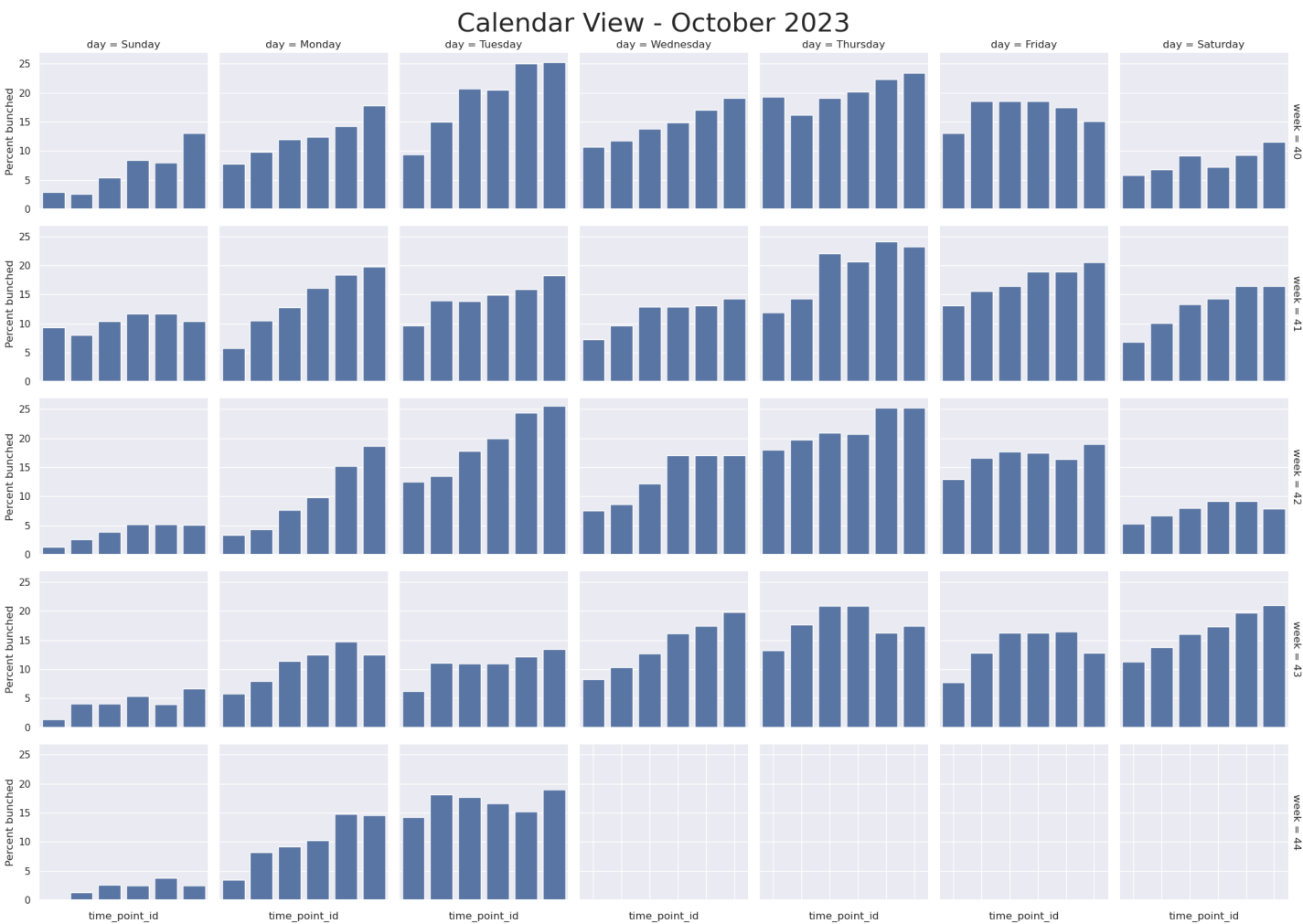


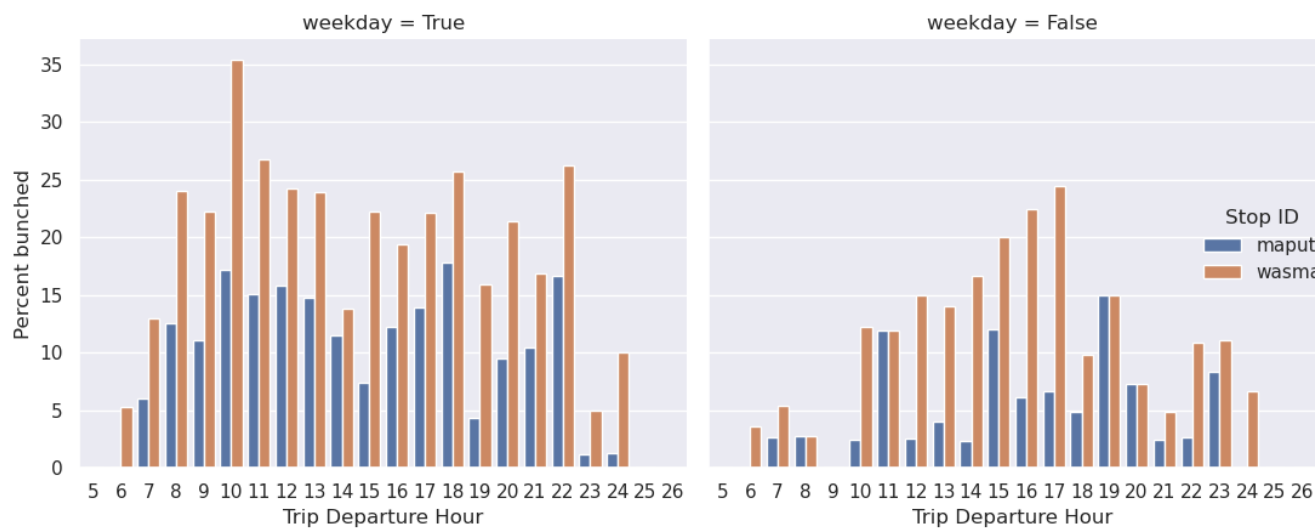
The following charts show bunching events as a percentage of total trips. Here, bunching is defined as headways < 25% of the scheduled\_headway.



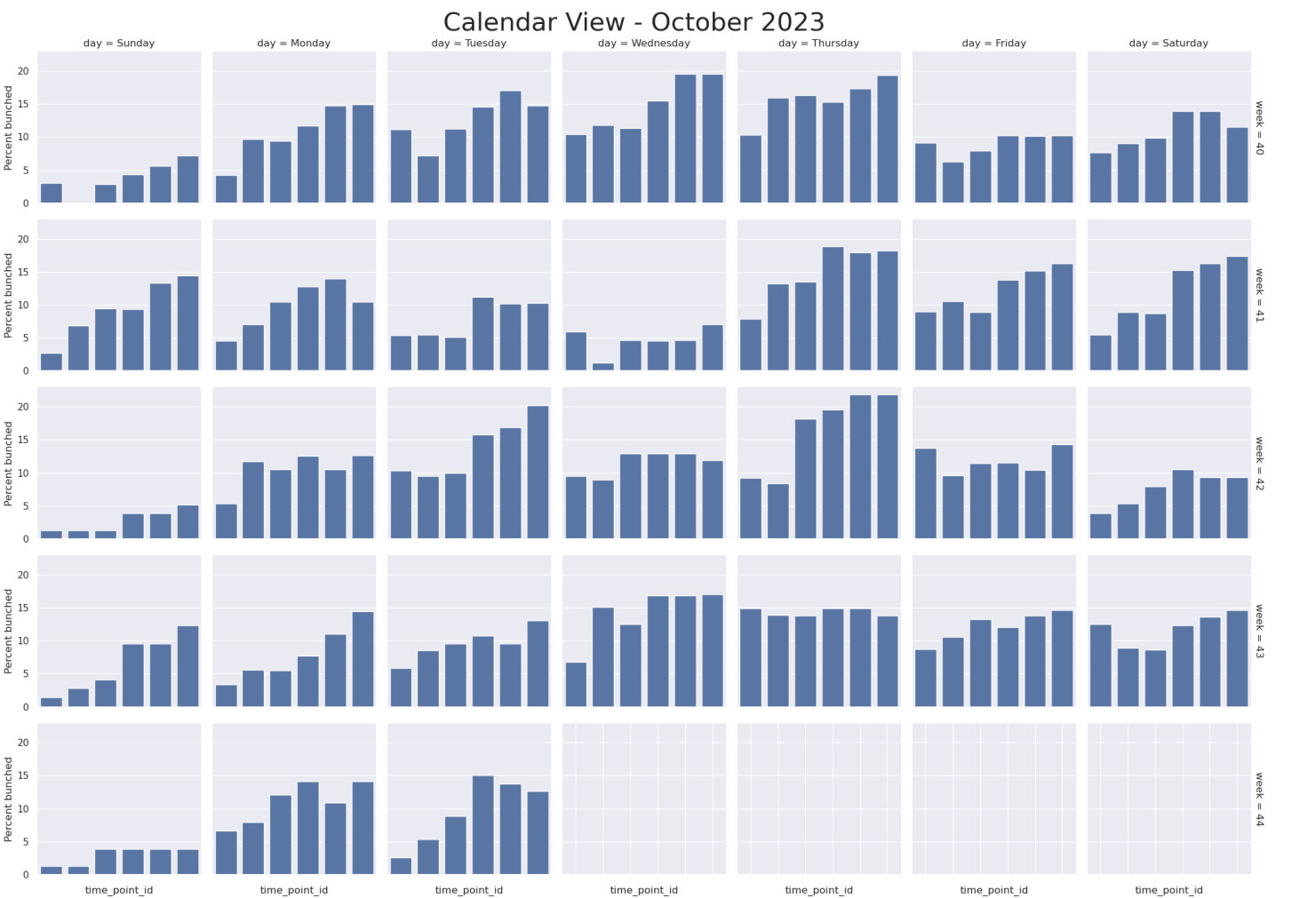
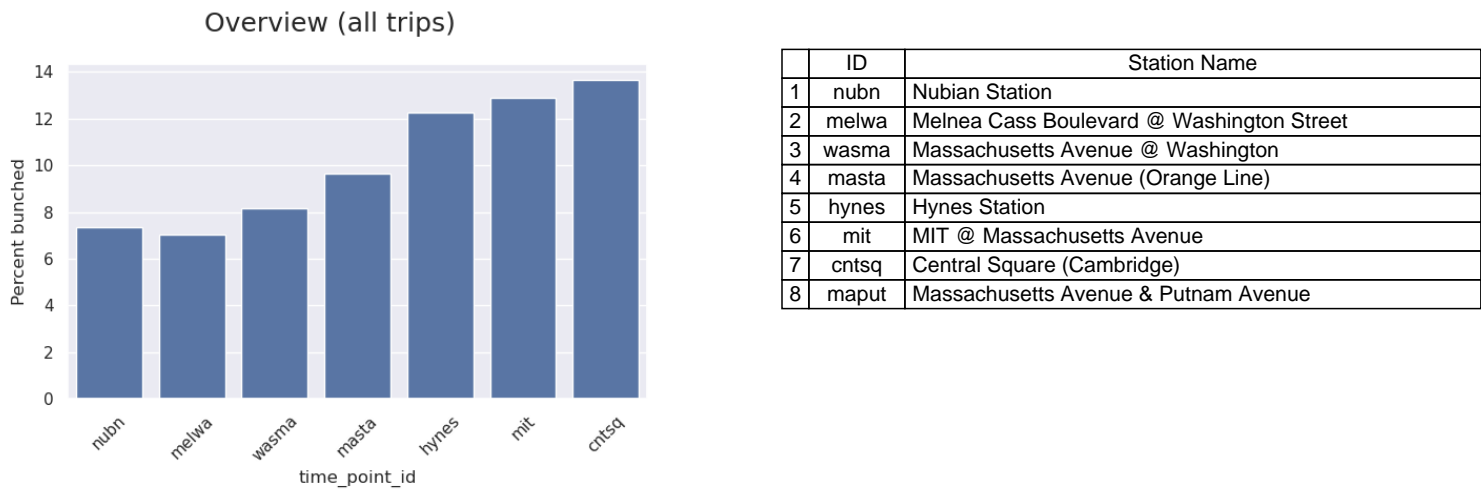
	ID	Station Name
1	hlgat	Harvard
2	maput	Massachusetts Avenue & Putnam Avenue
3	cntsq	Central Square (Cambridge)
4	mit	MIT @ Massachusetts Avenue
5	hynes	Hynes Station
6	masta	Massachusetts Avenue (Orange Line)
7	wasma	Massachusetts Avenue @ Washington
8	melwa	Melnea Cass Boulevard @ Washington Street



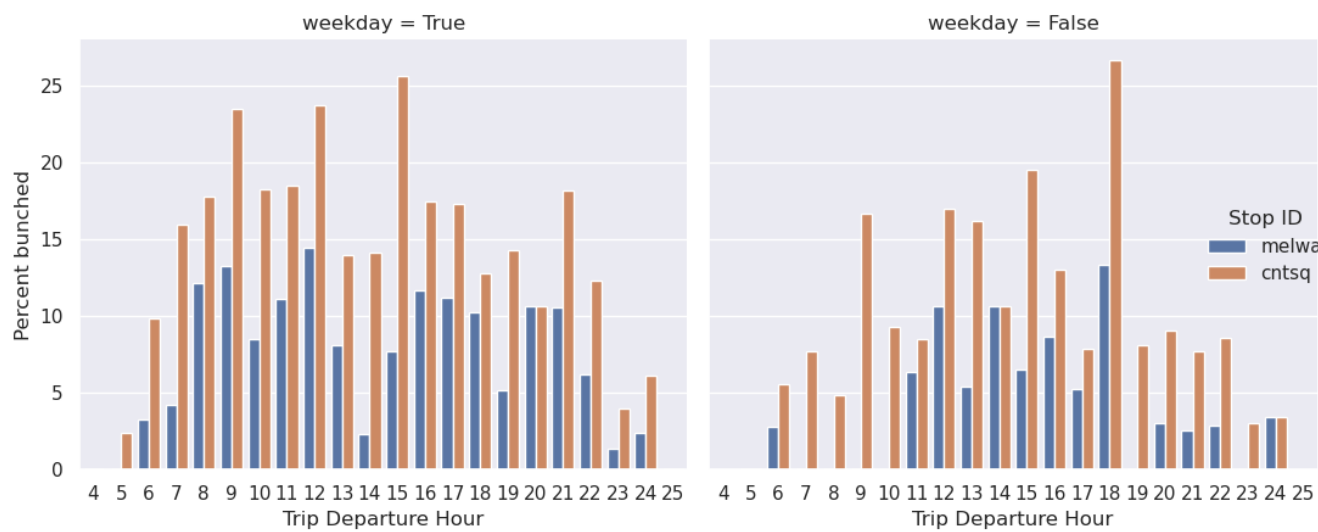
Weekday vs Weekend trips



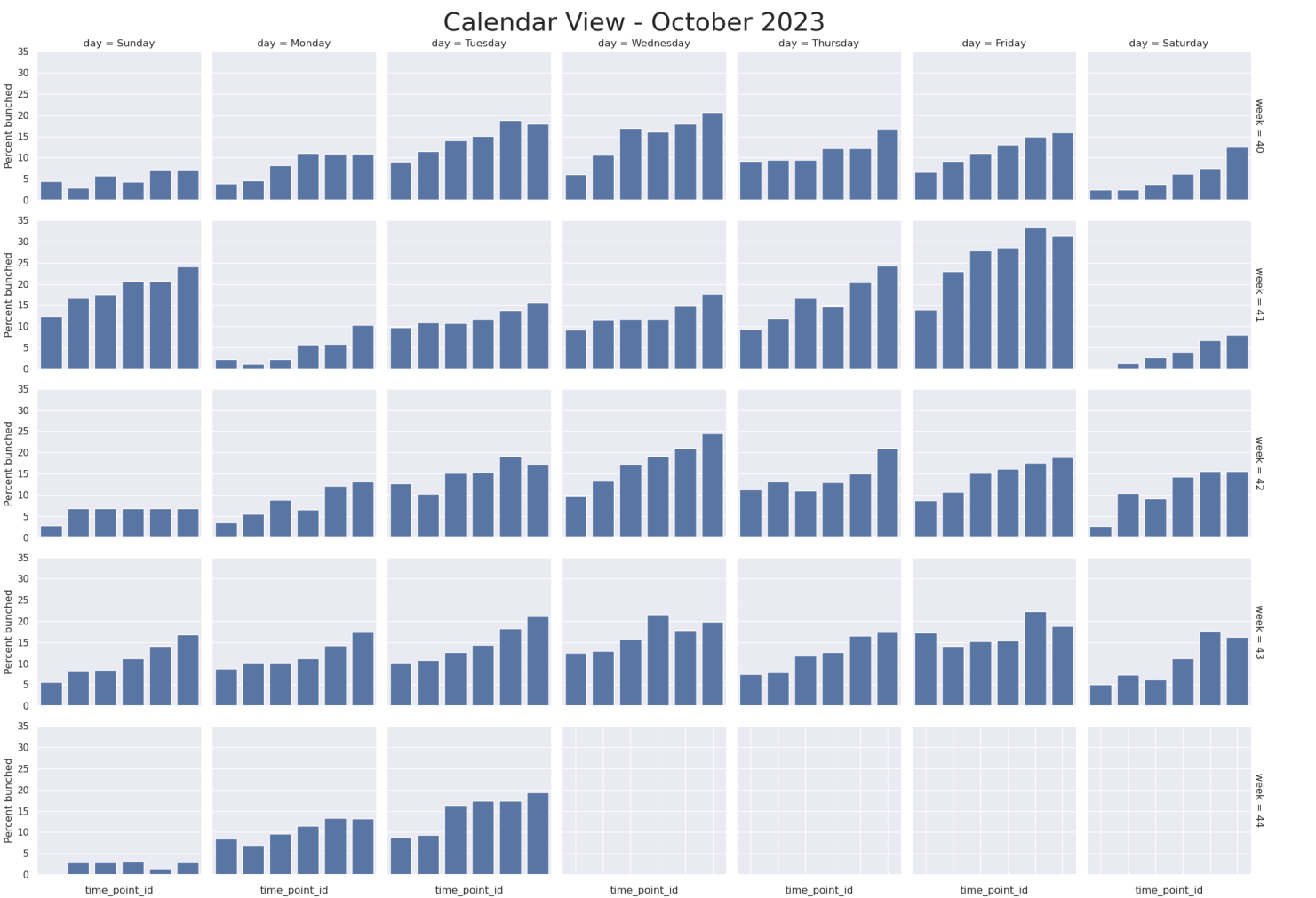
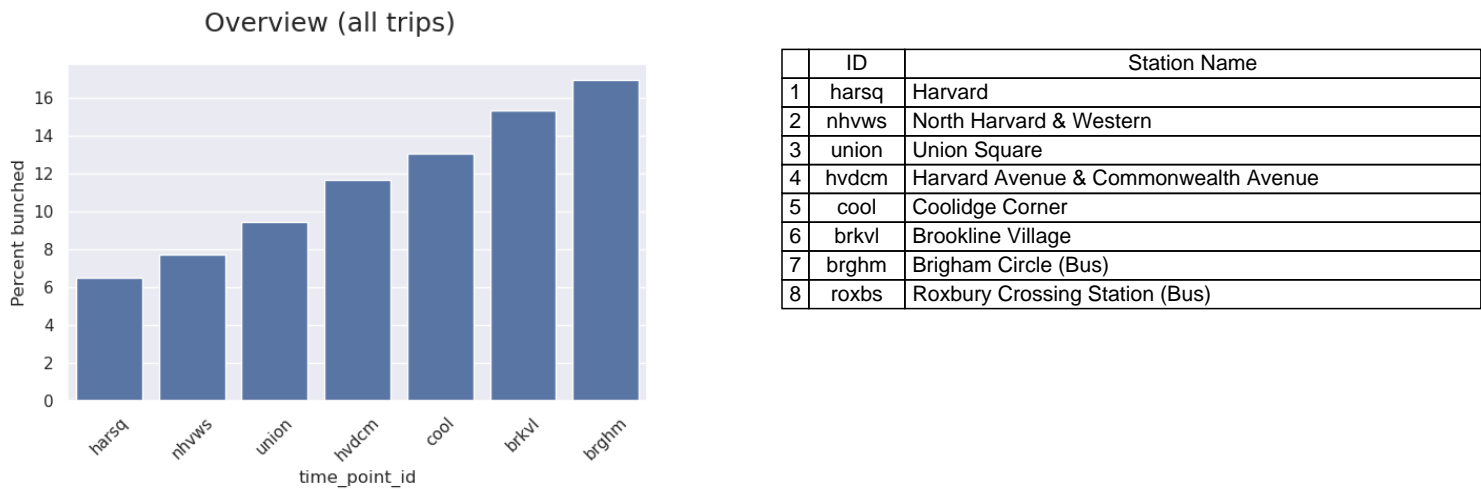
The following charts show bunching events as a percentage of total trips. Here, bunching is defined as headways < 25% of the scheduled\_headway.



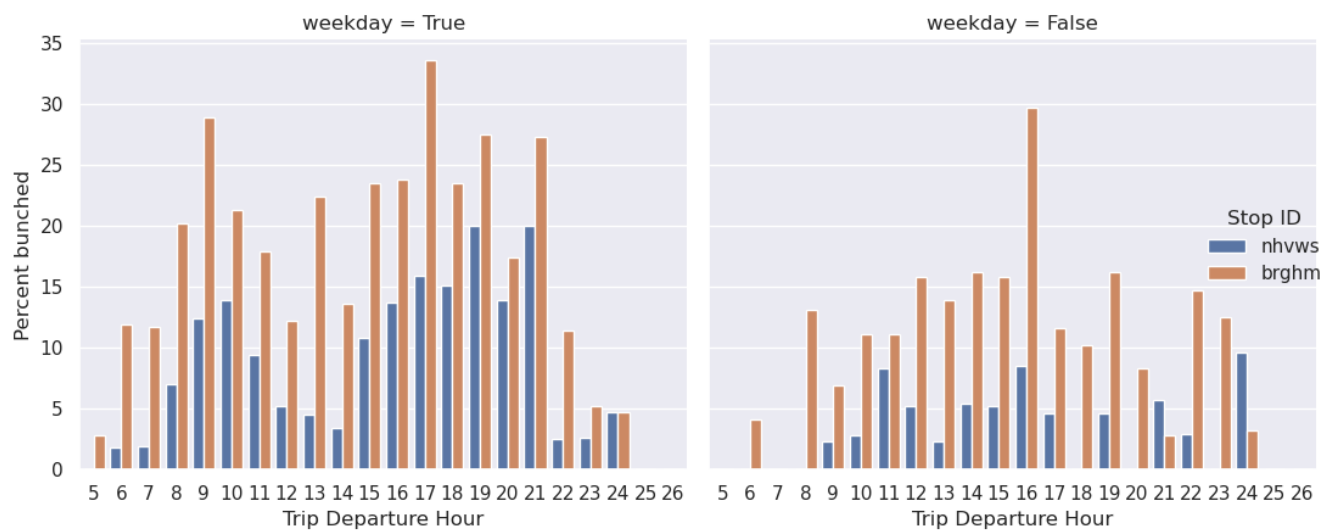
Weekday vs Weekend trips



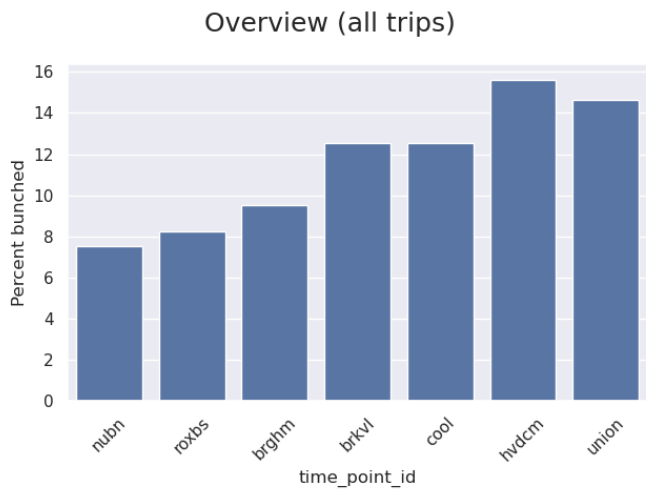
The following charts show bunching events as a percentage of total trips. Here, bunching is defined as headways < 25% of the scheduled\_headway.



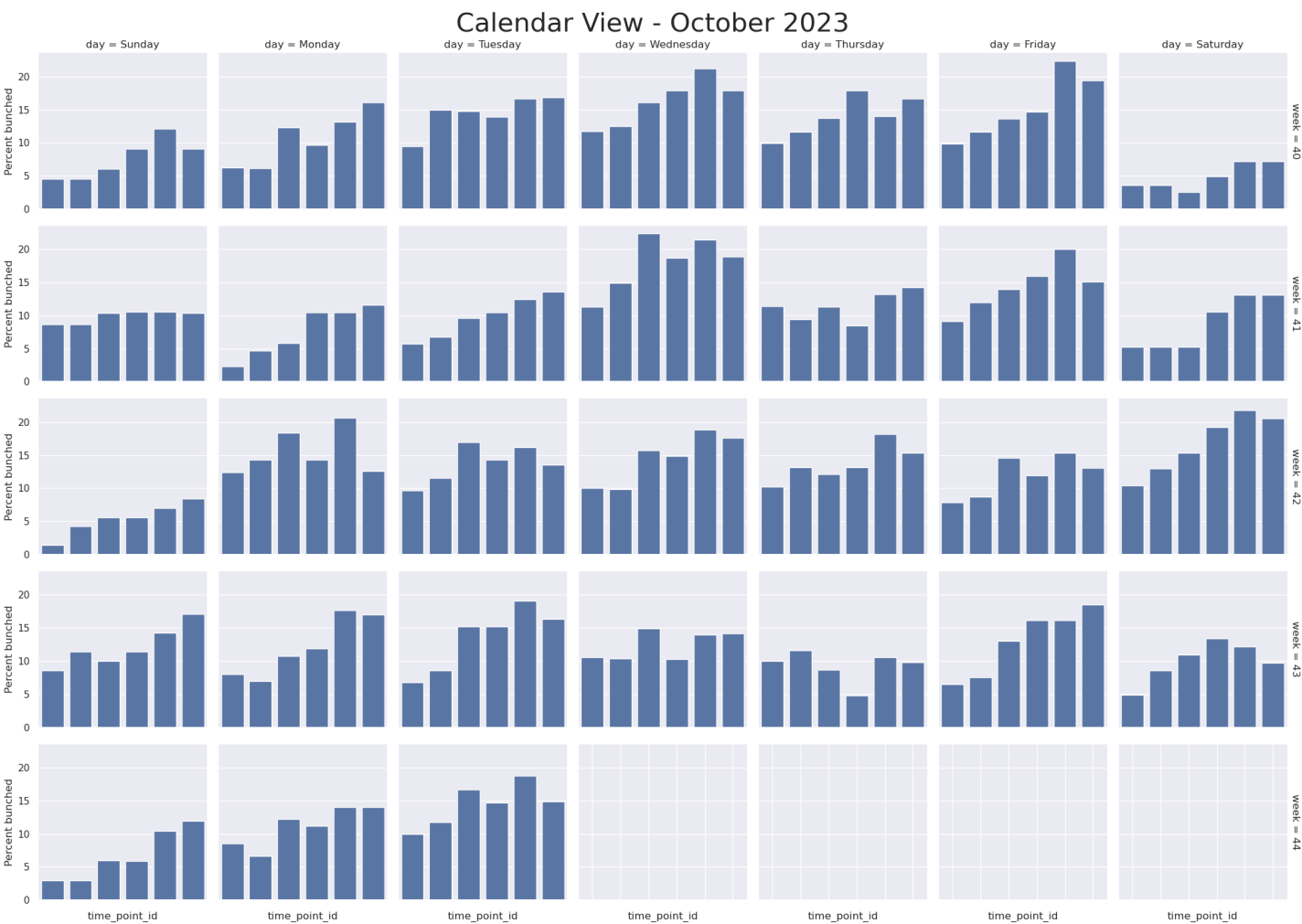
Weekday vs Weekend trips



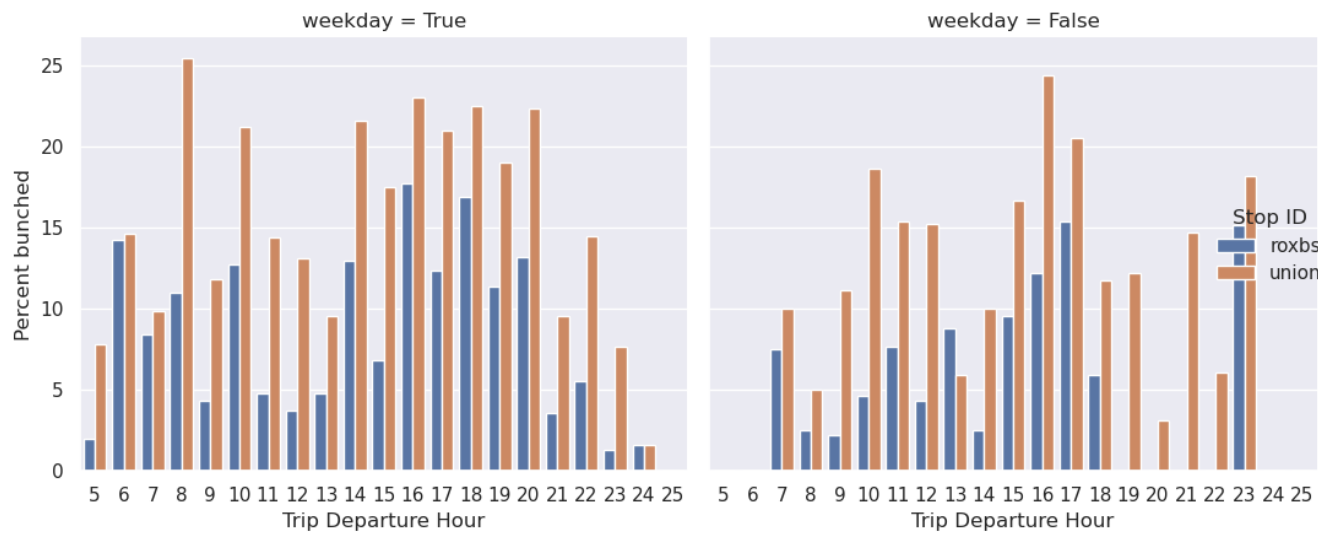
The following charts show bunching events as a percentage of total trips. Here, bunching is defined as headways < 25% of the scheduled\_headway.



	ID	Station Name
1	nubn	Nubian Station
2	roxbs	Roxbury Crossing Station (Bus)
3	brghm	Brigham Circle (Bus)
4	brkvl	Brookline Village
5	cool	Coolidge Corner
6	hvdcn	Harvard Avenue & Commonwealth Avenue
7	union	Union Square
8	nhvws	North Harvard & Western

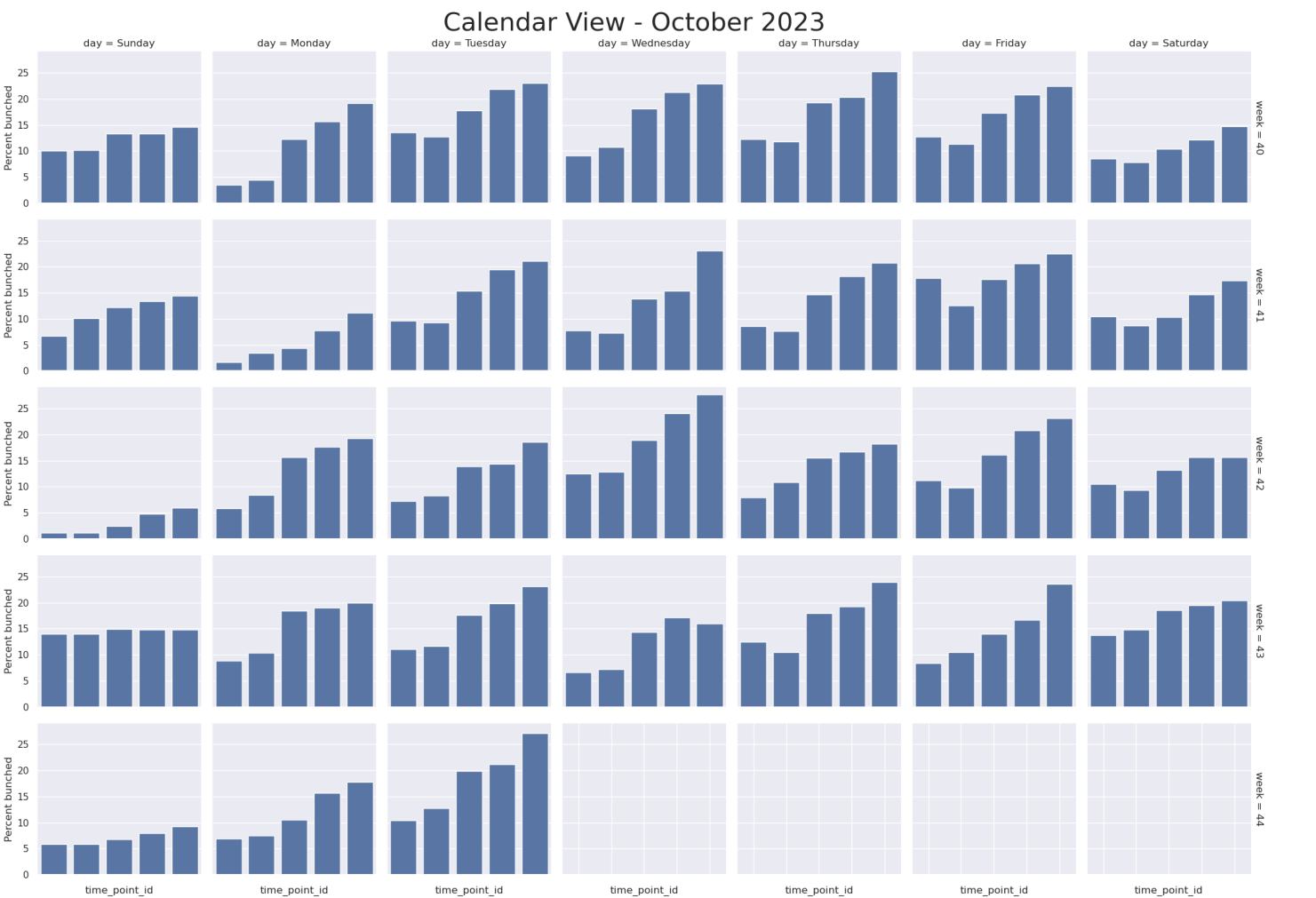
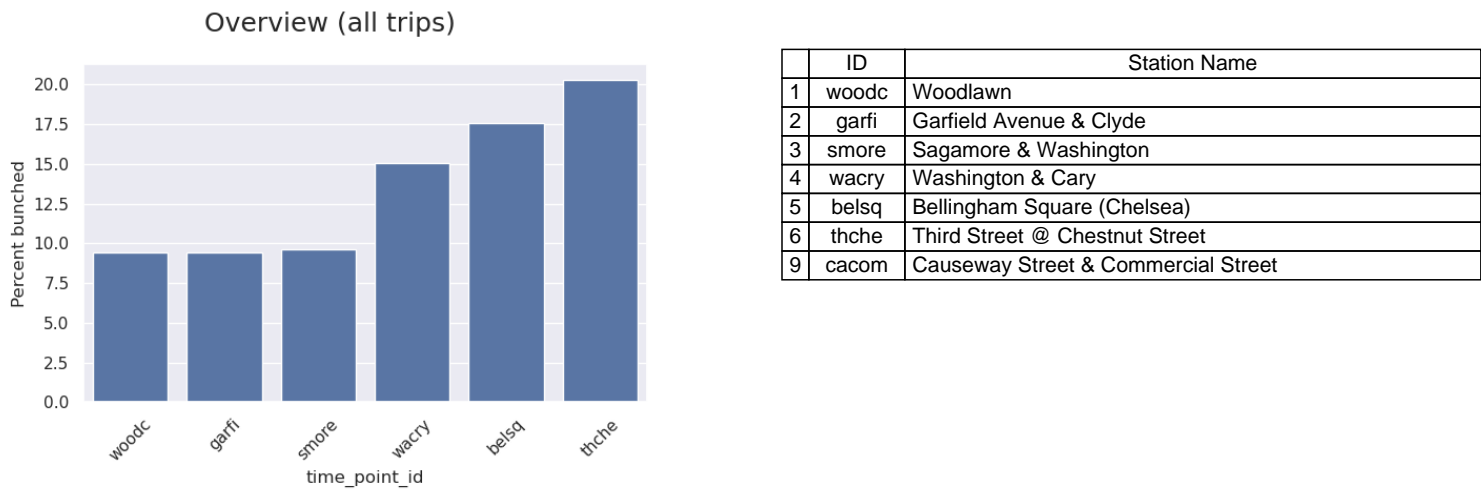


Weekday vs Weekend trips

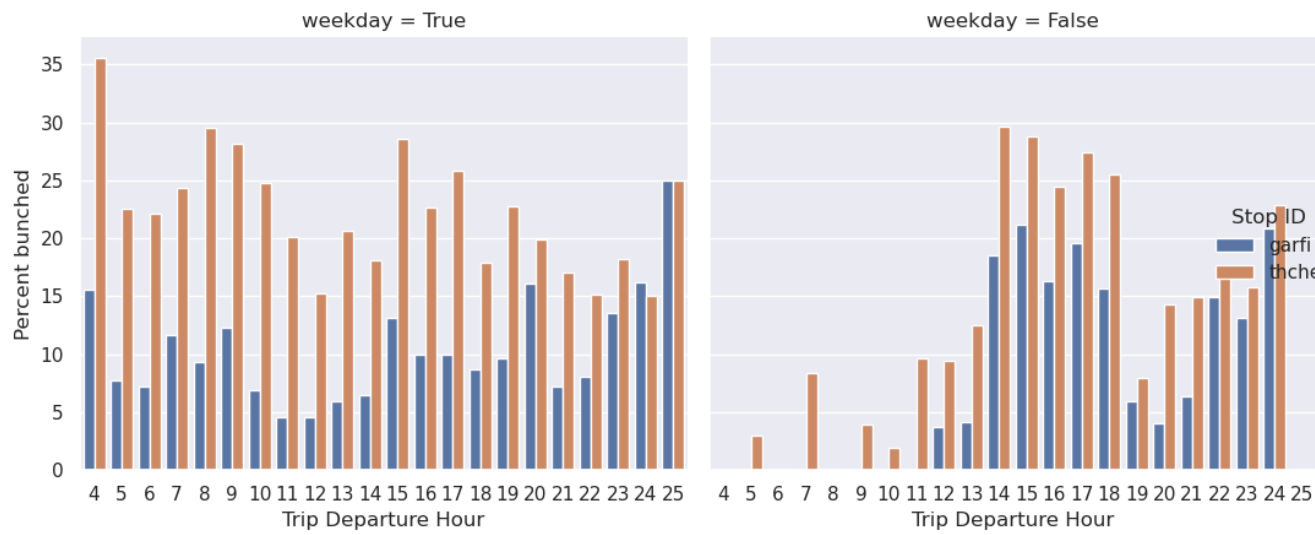




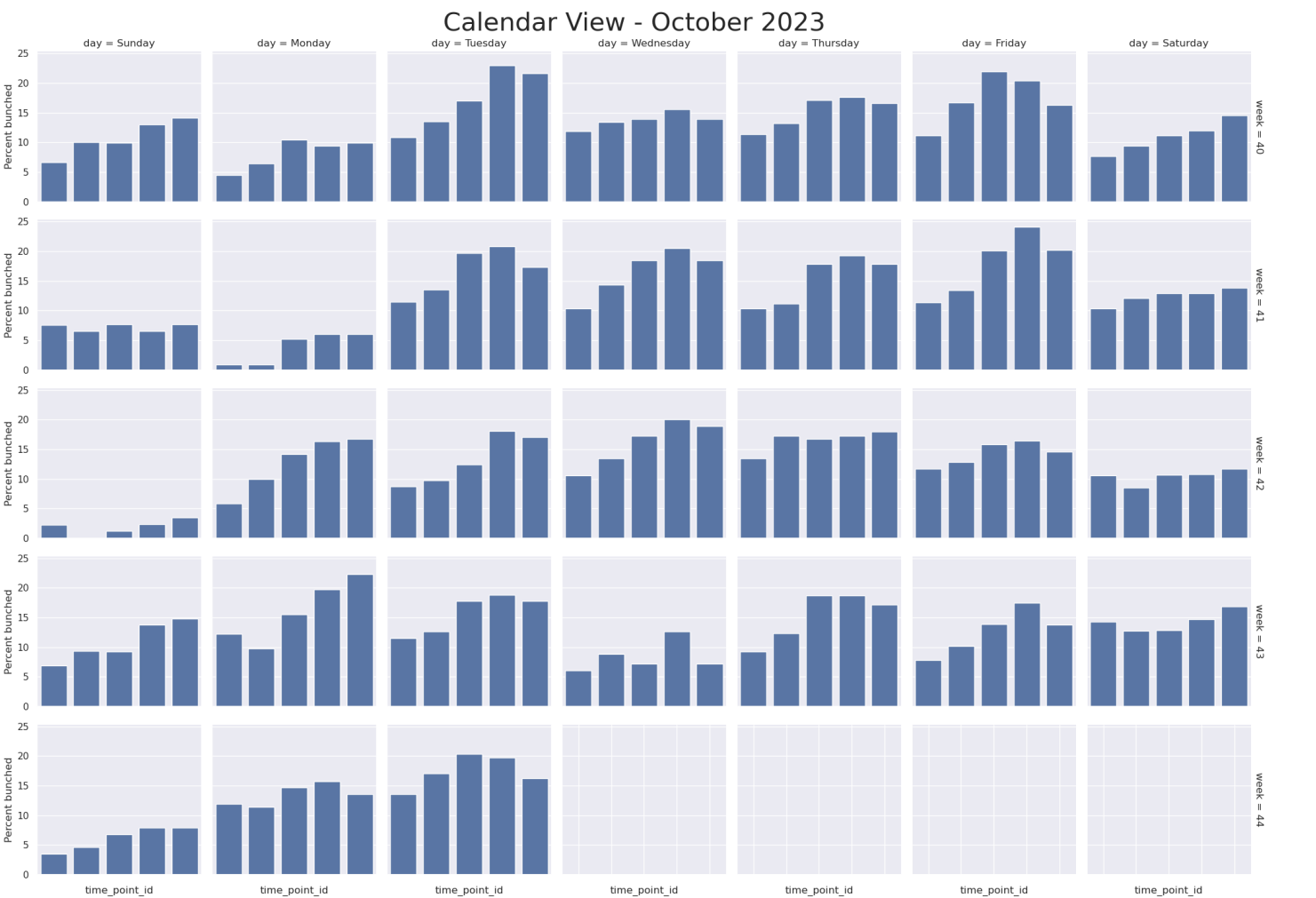
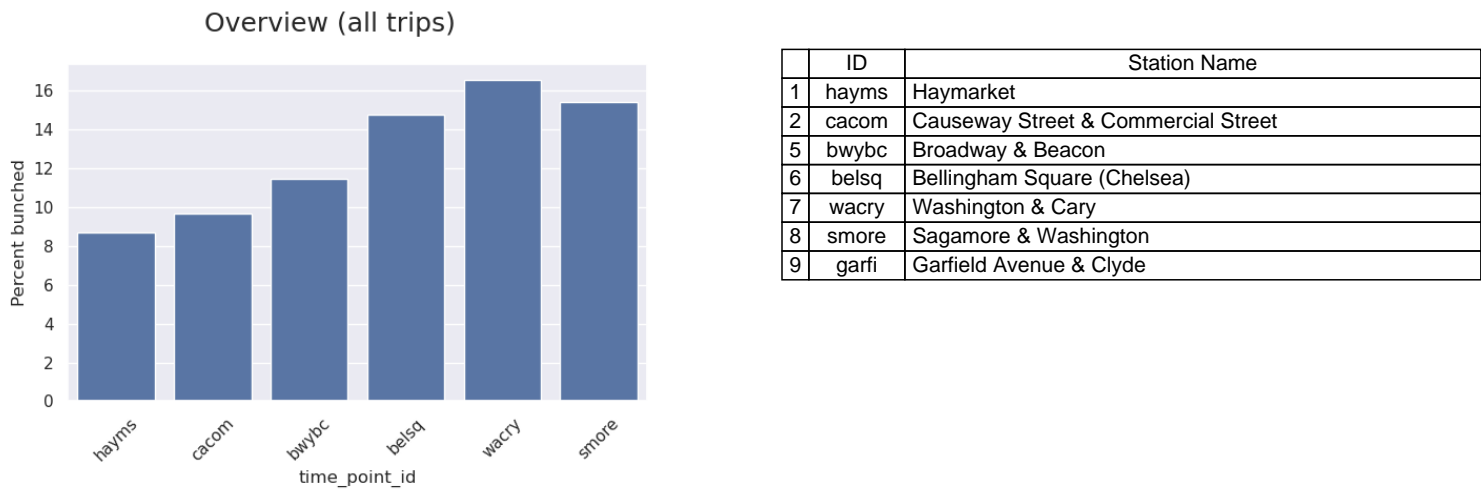
The following charts show bunching events as a percentage of total trips. Here, bunching is defined as headways < 25% of the scheduled\_headway.



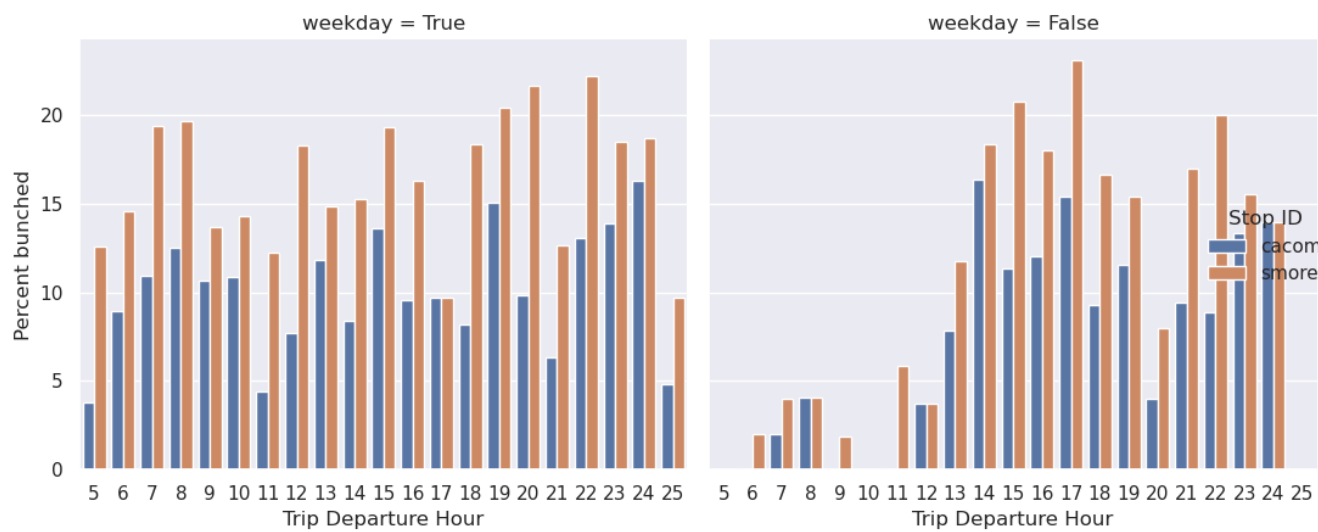
Weekday vs Weekend trips



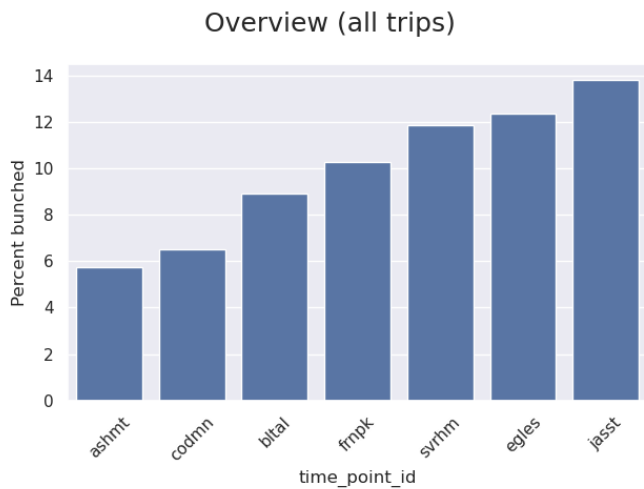
The following charts show bunching events as a percentage of total trips. Here, bunching is defined as headways < 25% of the scheduled\_headway.



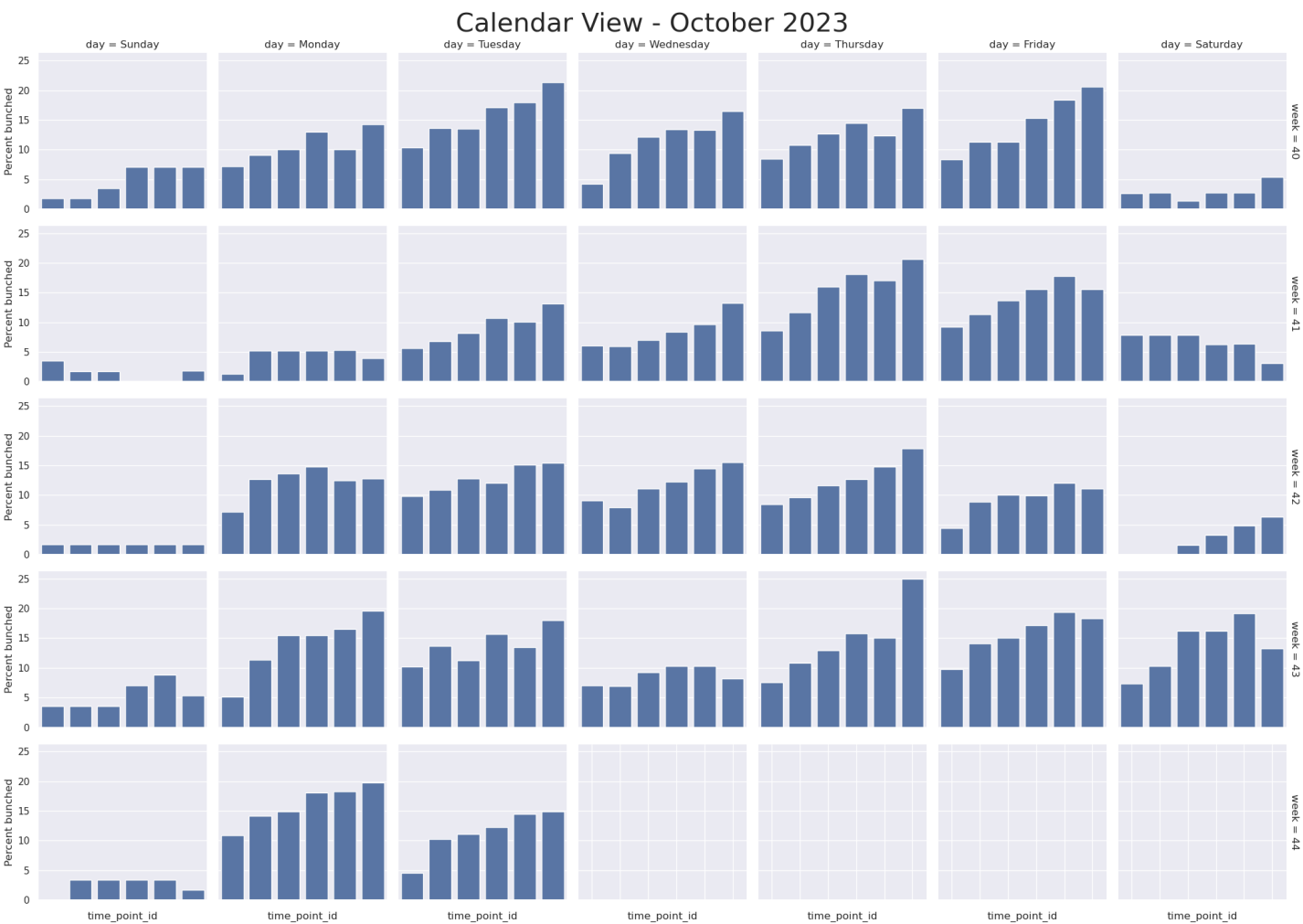
Weekday vs Weekend trips



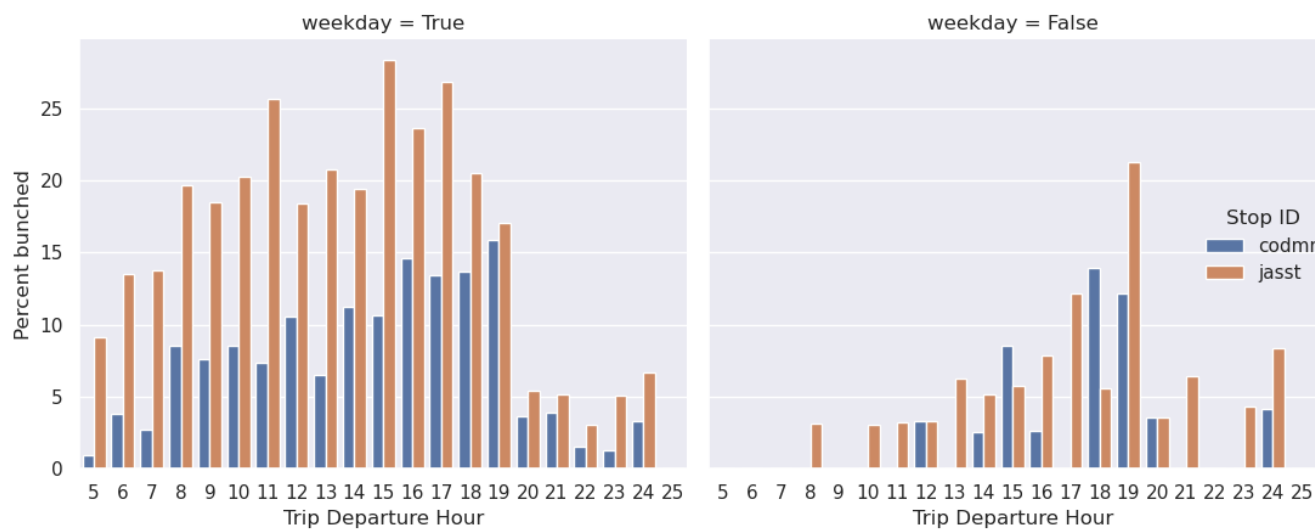
The following charts show bunching events as a percentage of total trips. Here, bunching is defined as headways < 25% of the scheduled\_headway.



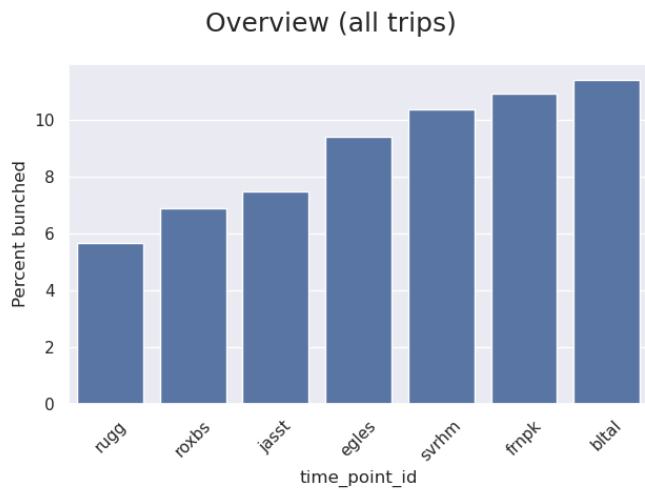
	ID	Station Name
1	ashmt	Ashmont Terminal
2	codmn	Codman Square
3	bltal	Blue Hill Avenue @ Talbot Avenue
4	frmpk	Franklin Park
5	svrhm	Seaver & Humboldt
6	egles	Egleston Square
7	jasst	Jackson Square Station
8	roxbs	Roxbury Crossing Station (Bus)



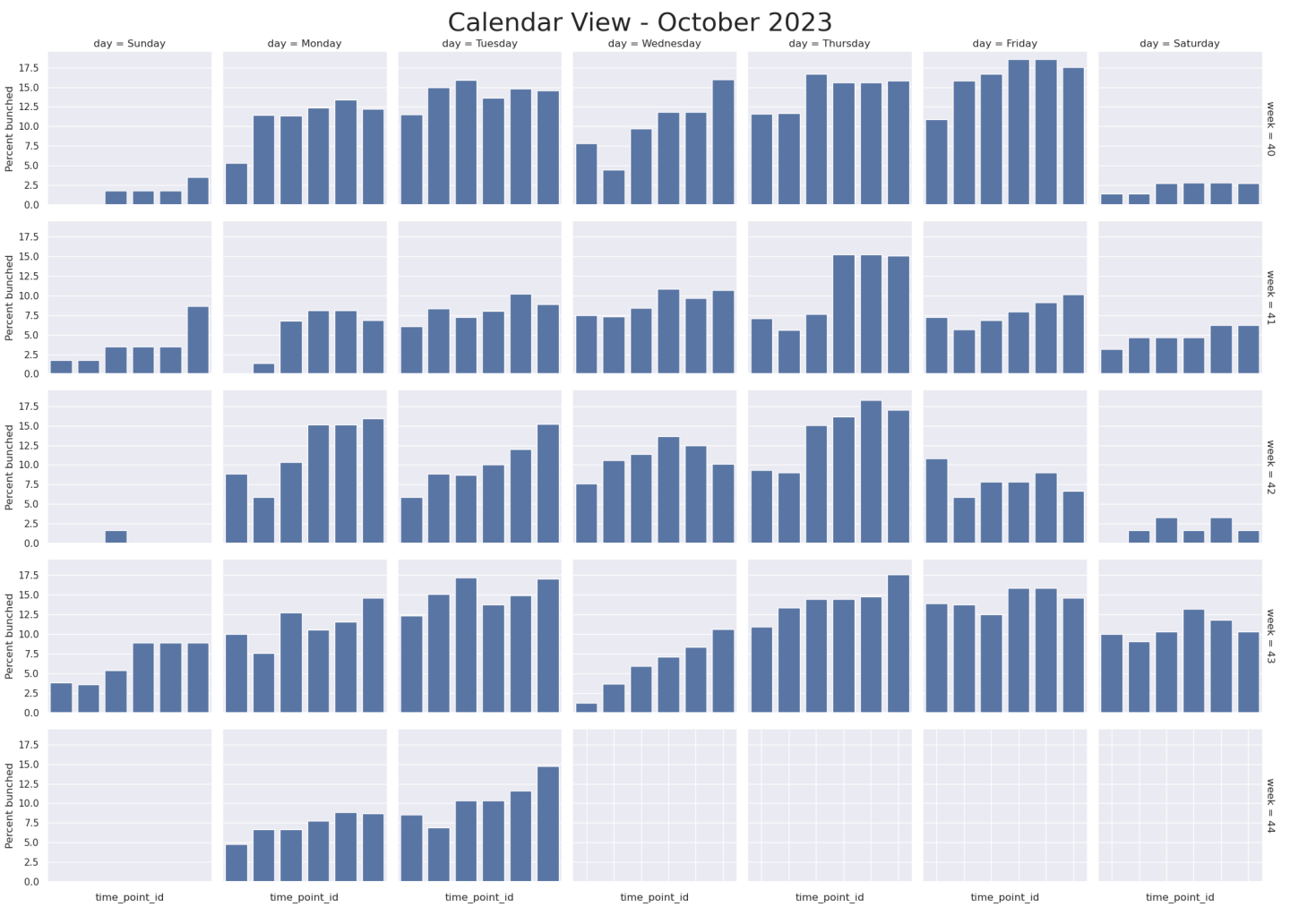
Weekday vs Weekend trips



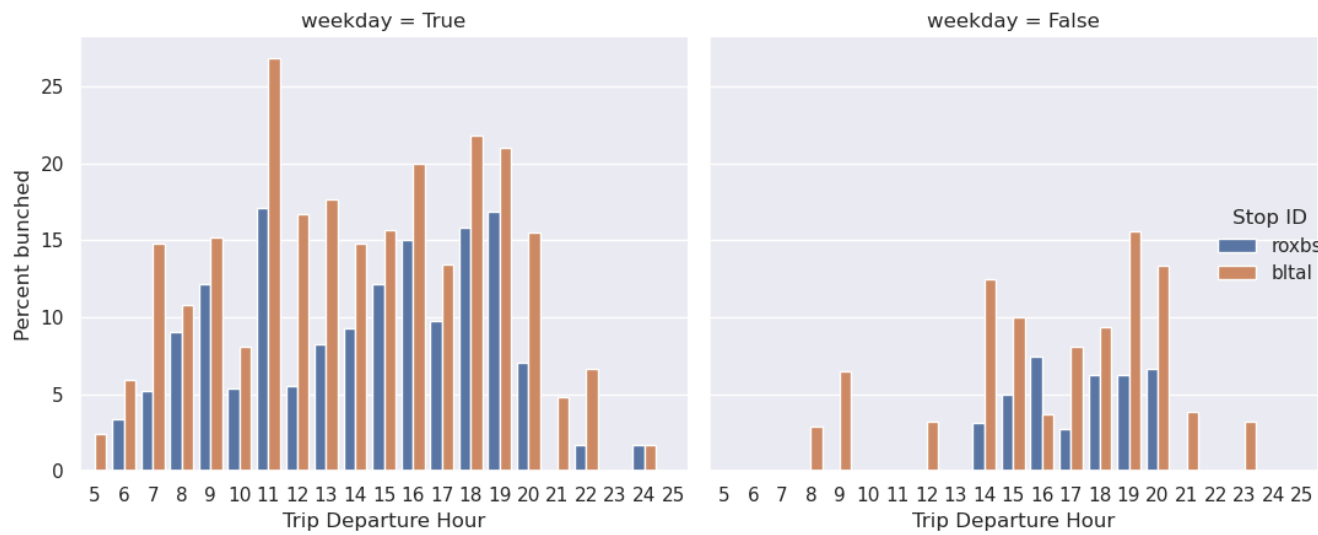
The following charts show bunching events as a percentage of total trips. Here, bunching is defined as headways < 25% of the scheduled\_headway.



	ID	Station Name
1	rugg	Ruggles
2	roxbs	Roxbury Crossing Station (Bus)
3	jasst	Jackson Square Station
4	egles	Egleston Square
5	svrhm	Seaver & Humboldt
6	frnpk	Franklin Park
7	bltal	Blue Hill Avenue @ Talbot Avenue
8	codmn	Codman Square

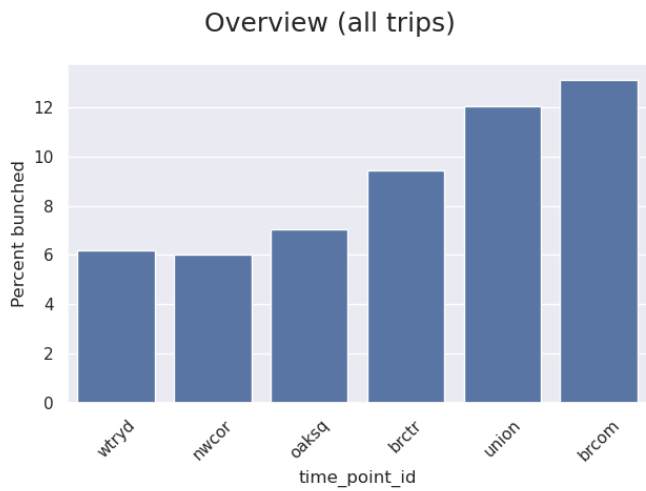


Weekday vs Weekend trips

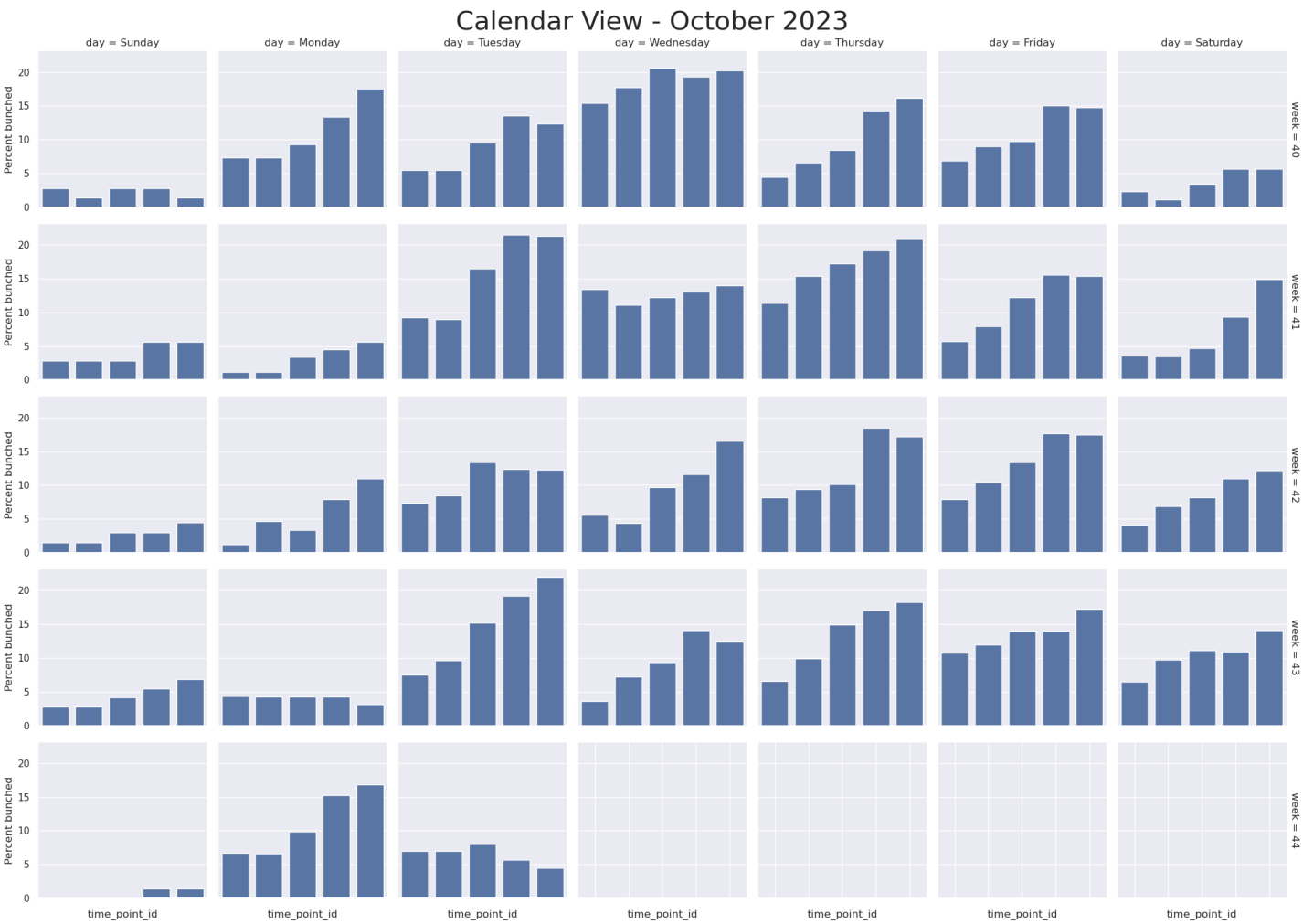




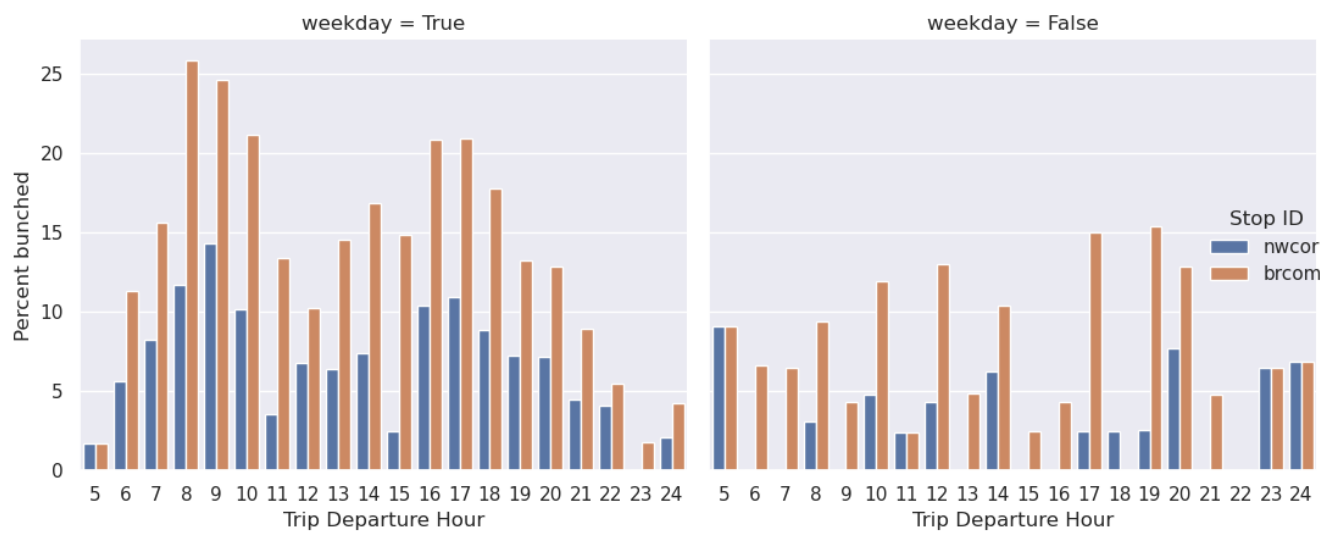
The following charts show bunching events as a percentage of total trips. Here, bunching is defined as headways < 25% of the scheduled\_headway.



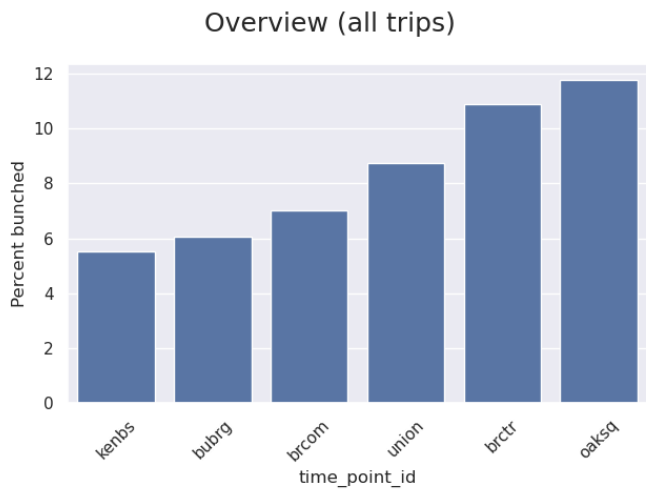
	ID	Station Name
1	wtryd	Watertown Yard
2	nwcot	Newton Corner (Bus)
3	oaksq	Oak Square
4	brctr	Brighton Center
5	union	Union Square
6	brcom	Brighton & Commonwealth Avenue
7	bubrg	Commonwealth Avenue @ BU Bridge



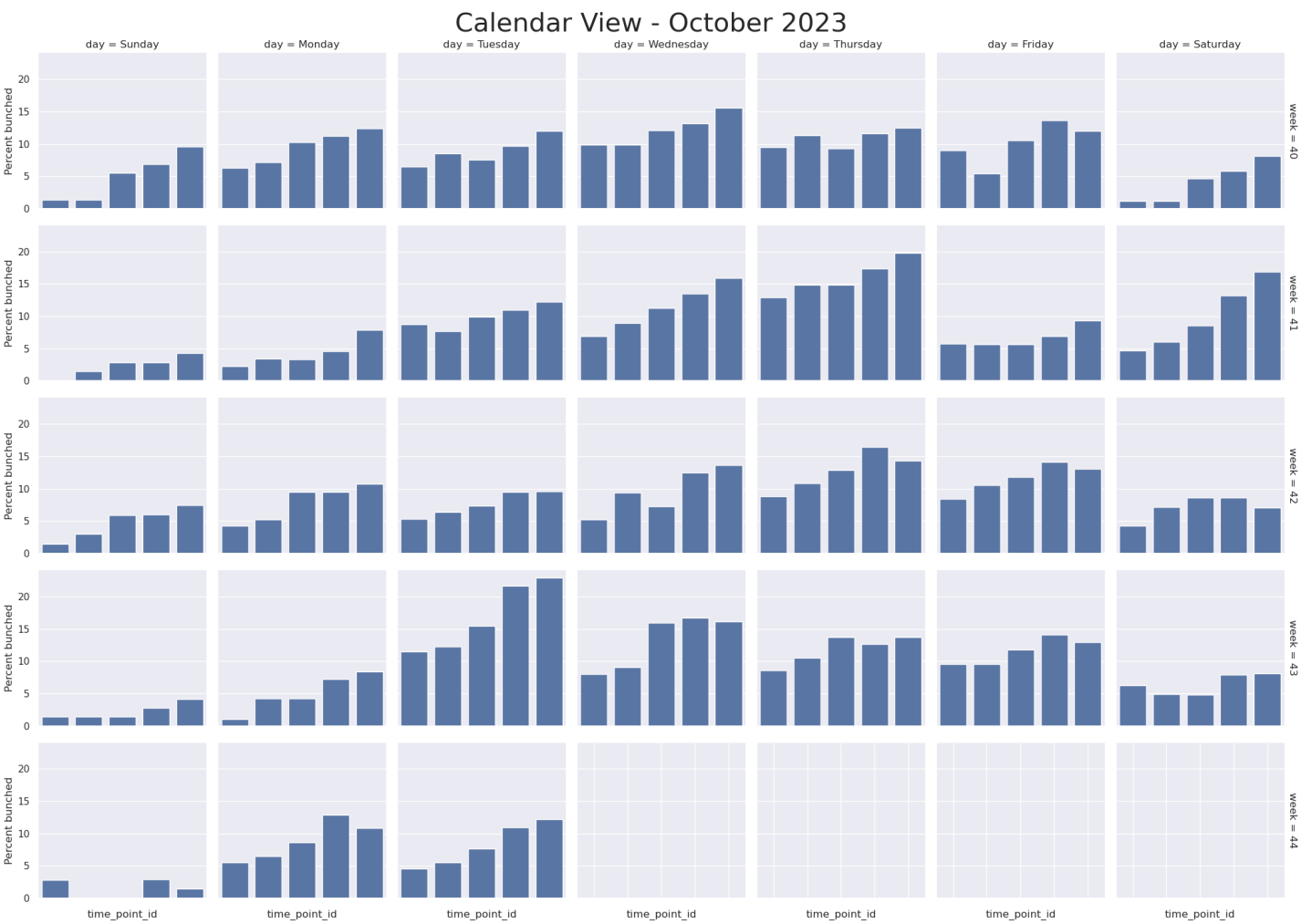
Weekday vs Weekend trips



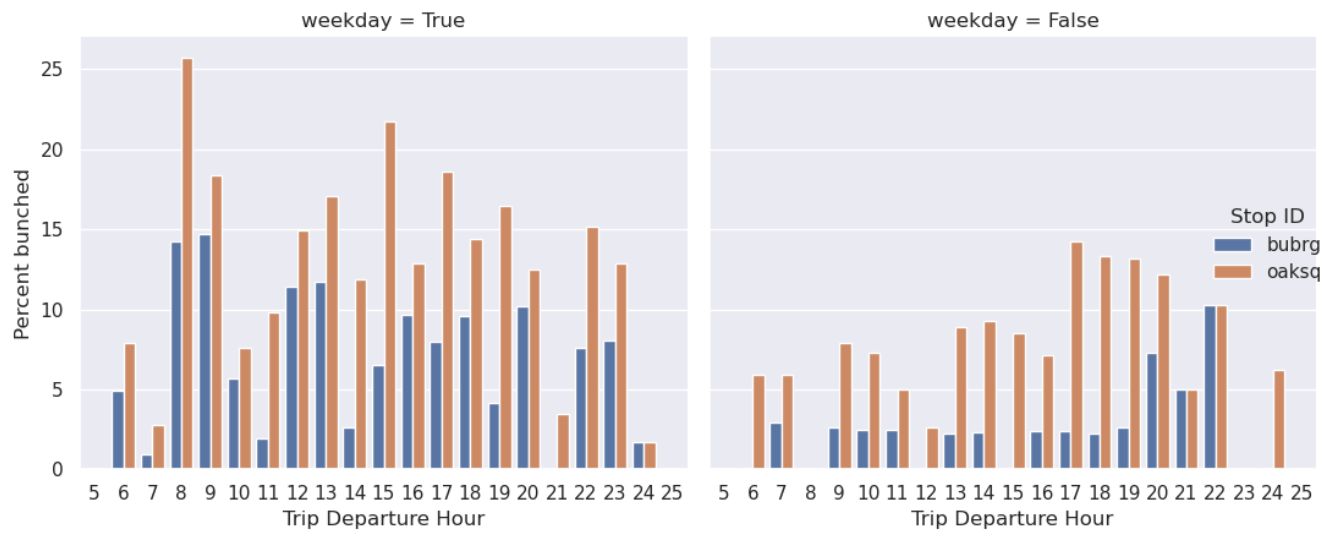
The following charts show bunching events as a percentage of total trips. Here, bunching is defined as headways < 25% of the scheduled\_headway.



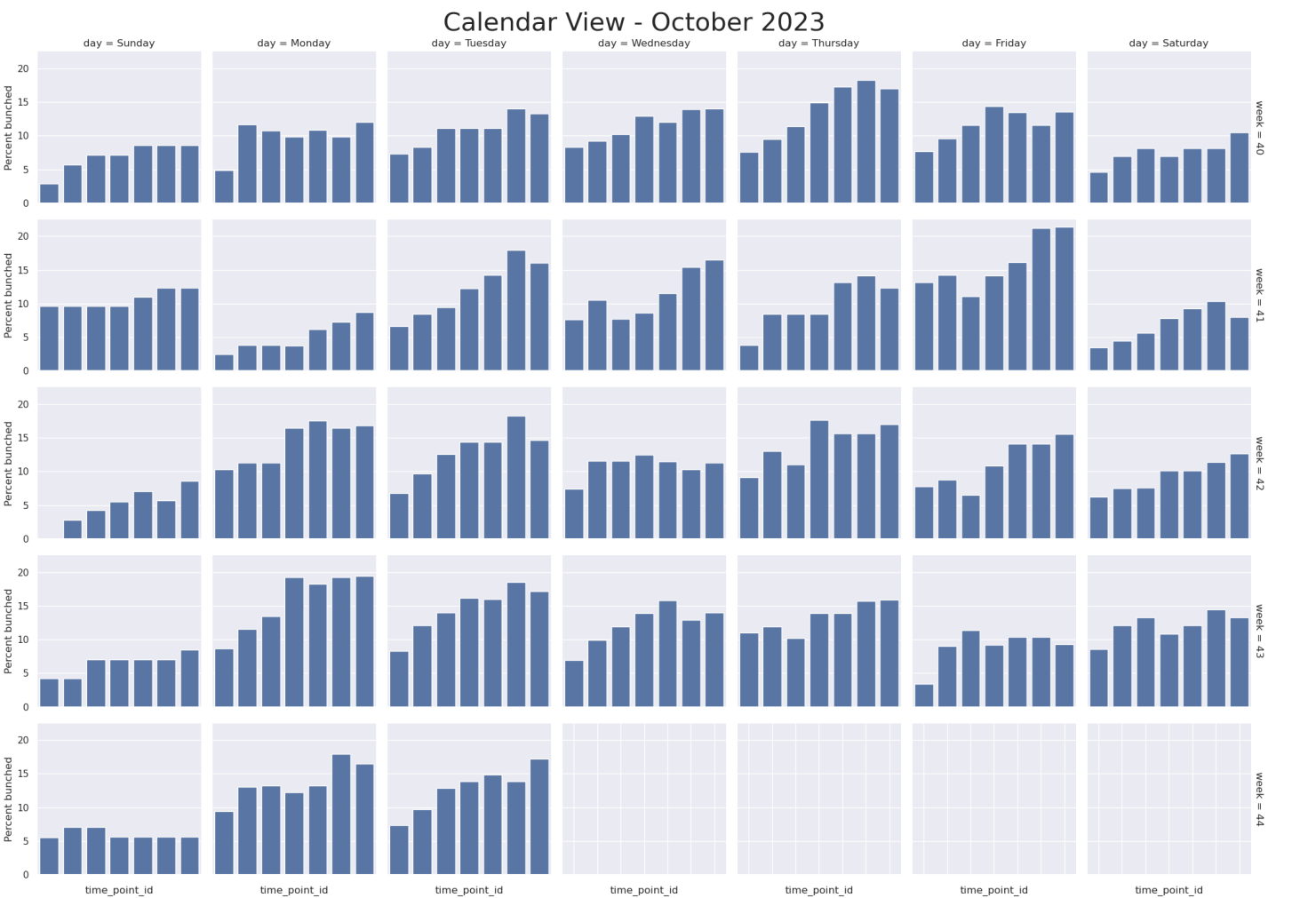
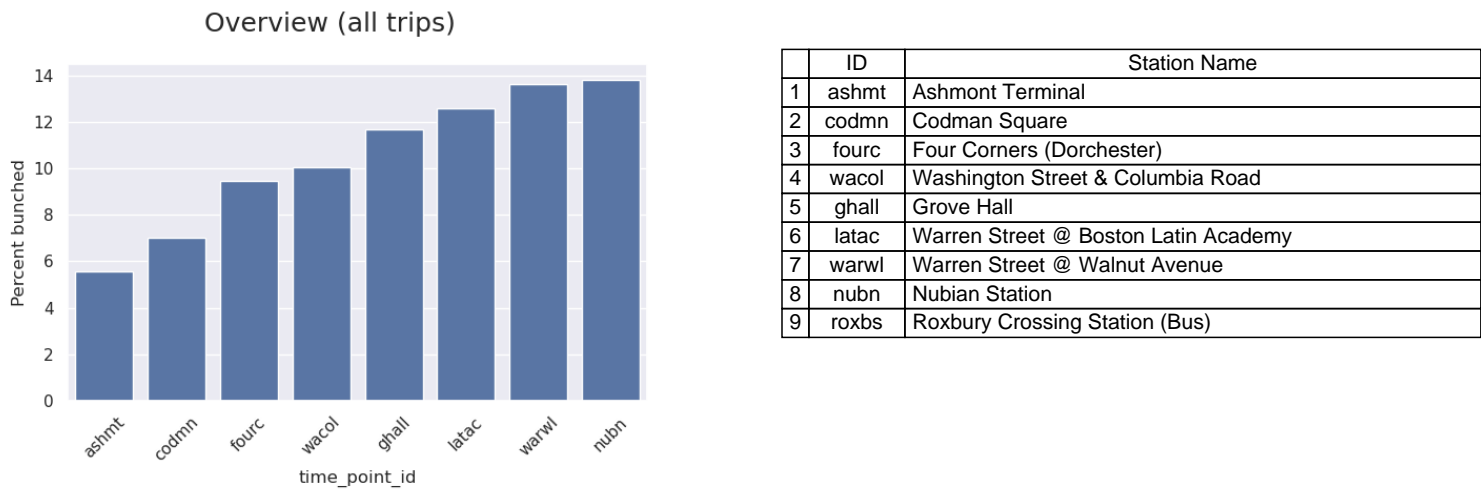
	ID	Station Name
1	kenbs	Kenmore (Busway)
2	bubrg	Commonwealth Avenue @ BU Bridge
3	brcom	Brighton & Commonwealth Avenue
4	union	Union Square
5	brctr	Brighton Center
6	oaksq	Oak Square
7	nwcor	Newton Corner (Bus)



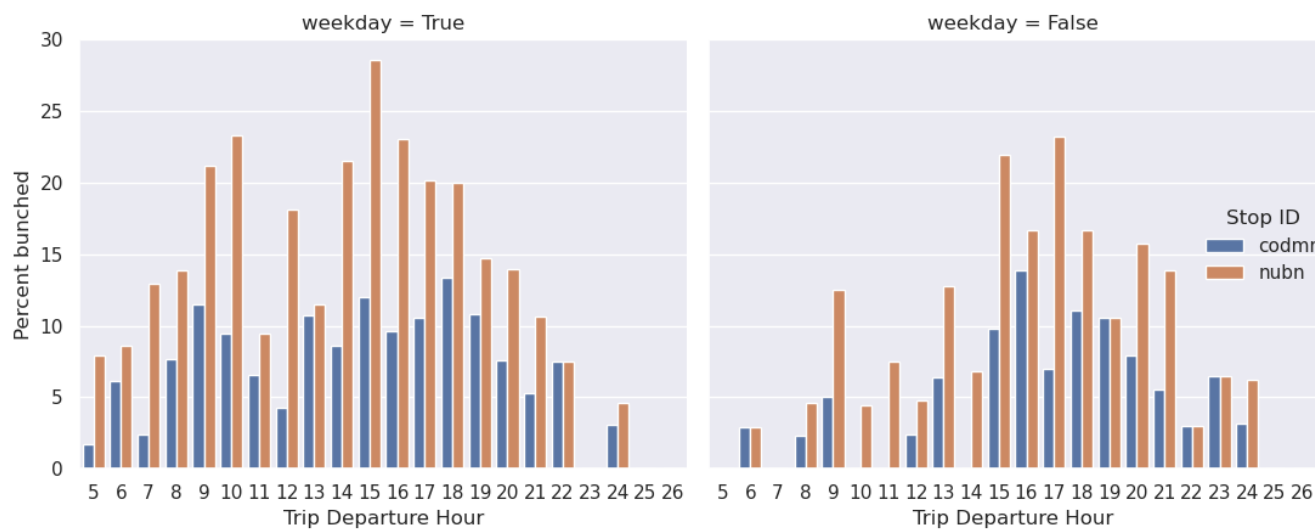
Weekday vs Weekend trips



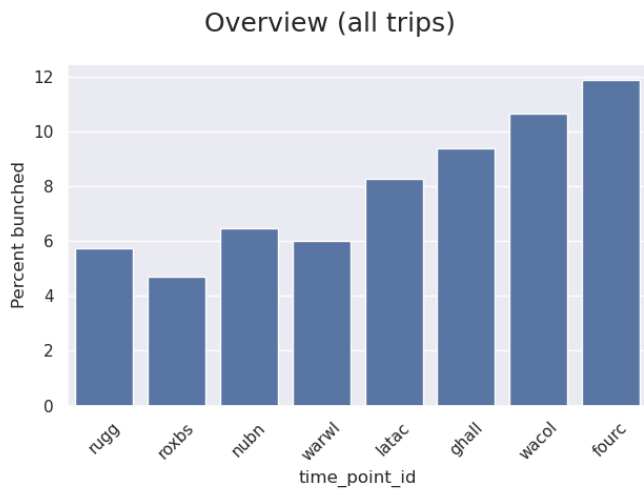
The following charts show bunching events as a percentage of total trips. Here, bunching is defined as headways < 25% of the scheduled\_headway.



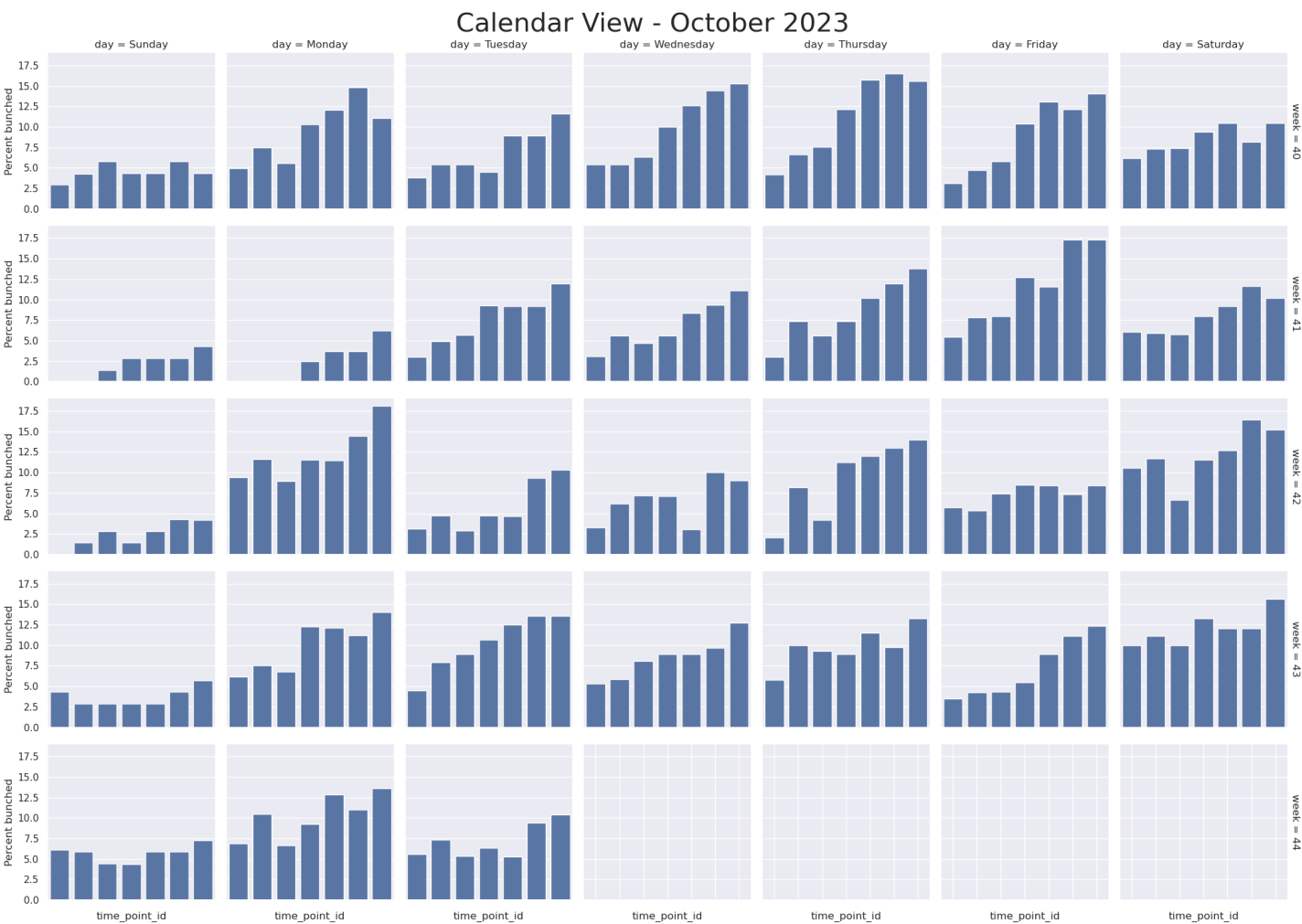
Weekday vs Weekend trips



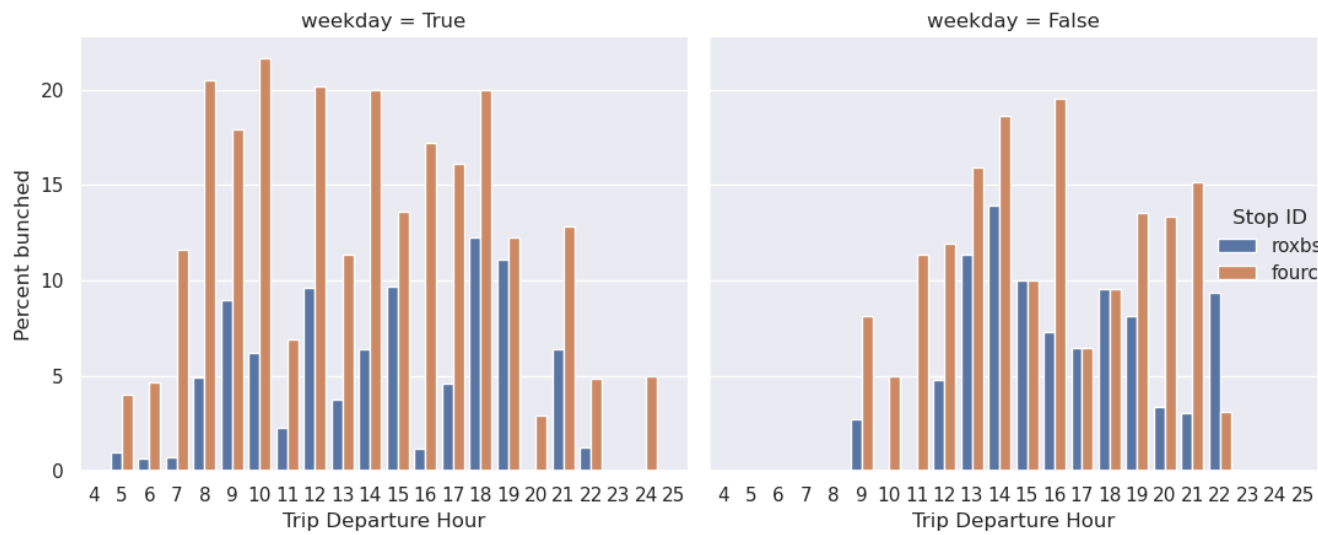
The following charts show bunching events as a percentage of total trips. Here, bunching is defined as headways < 25% of the scheduled\_headway.



	ID	Station Name
1	rugg	Ruggles
2	roxbs	Roxbury Crossing Station (Bus)
3	nubn	Nubian Station
4	warwl	Warren Street @ Walnut Avenue
5	latak	Warren Street @ Boston Latin Academy
6	ghall	Grove Hall
7	wacol	Washington Street & Columbia Road
8	fourc	Four Corners (Dorchester)
9	codmn	Codman Square

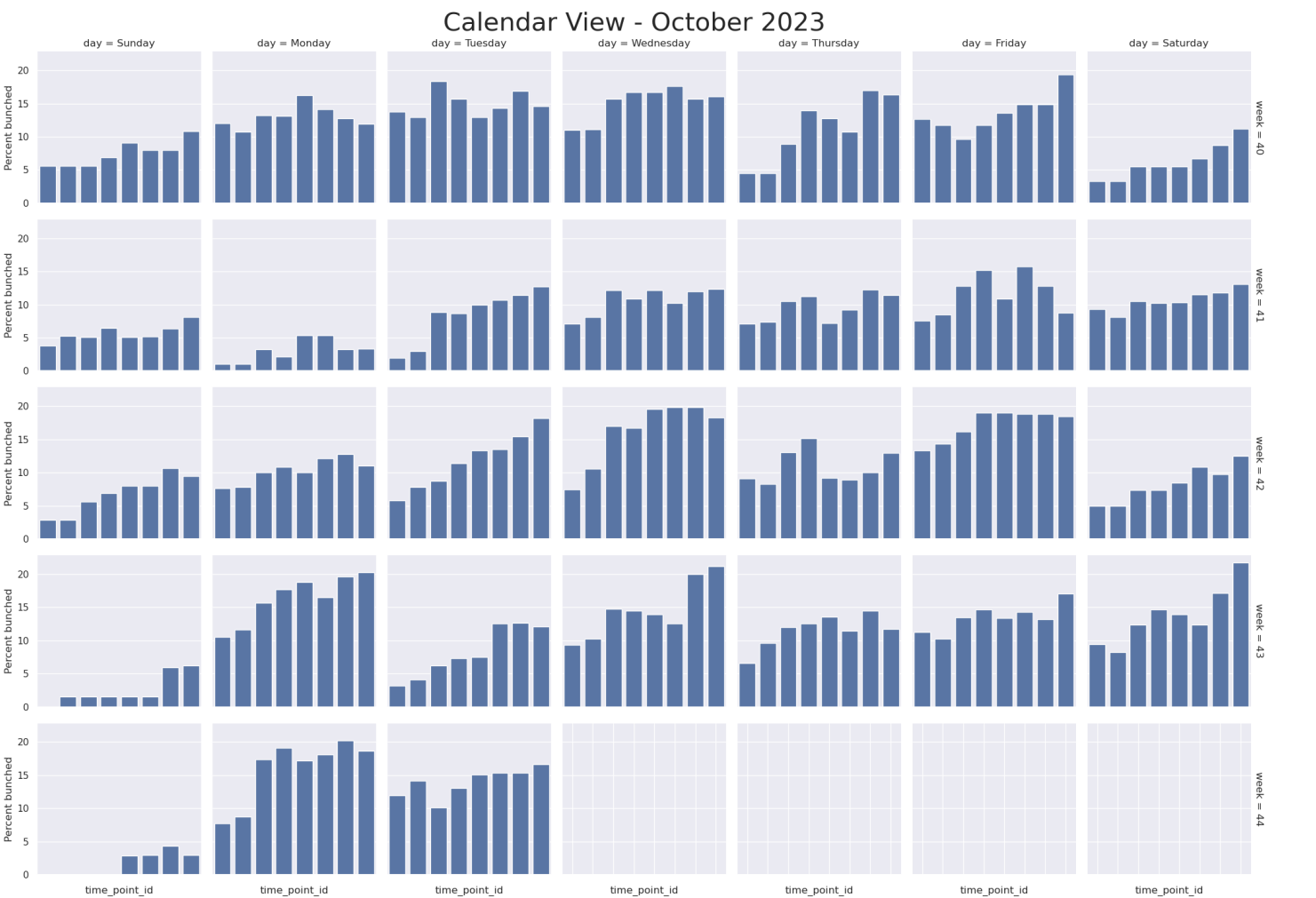
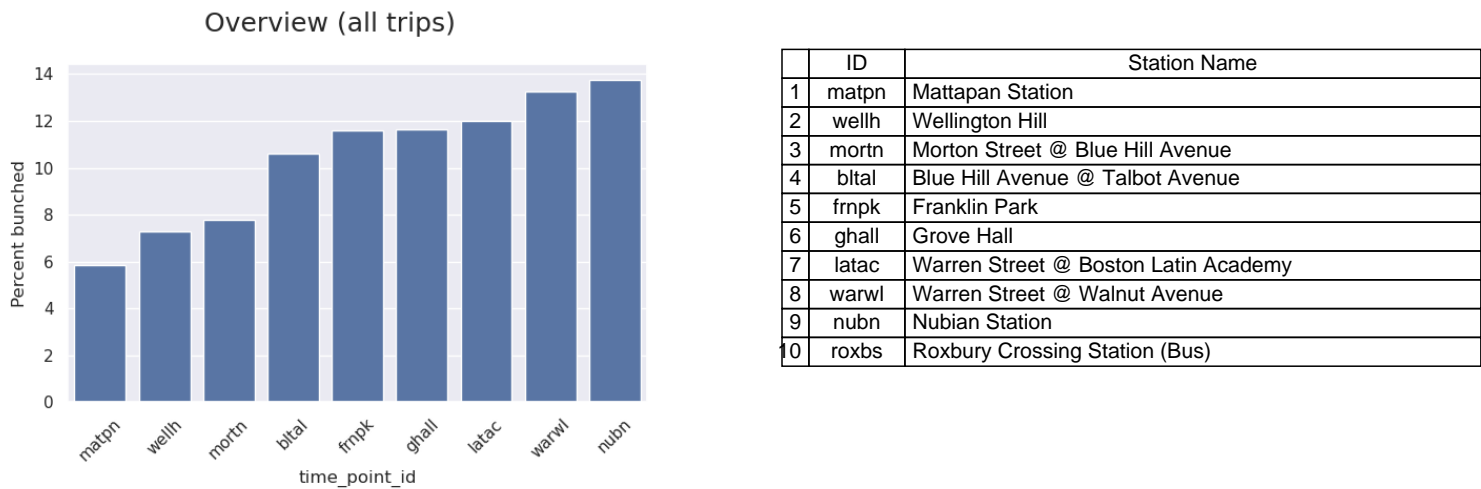


Weekday vs Weekend trips

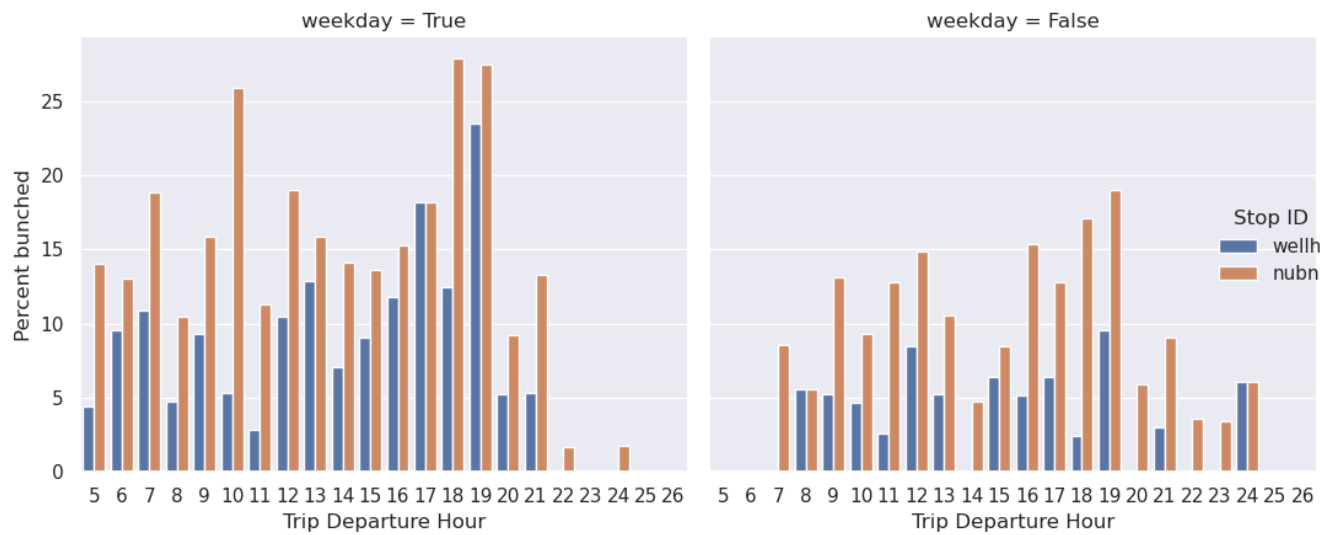




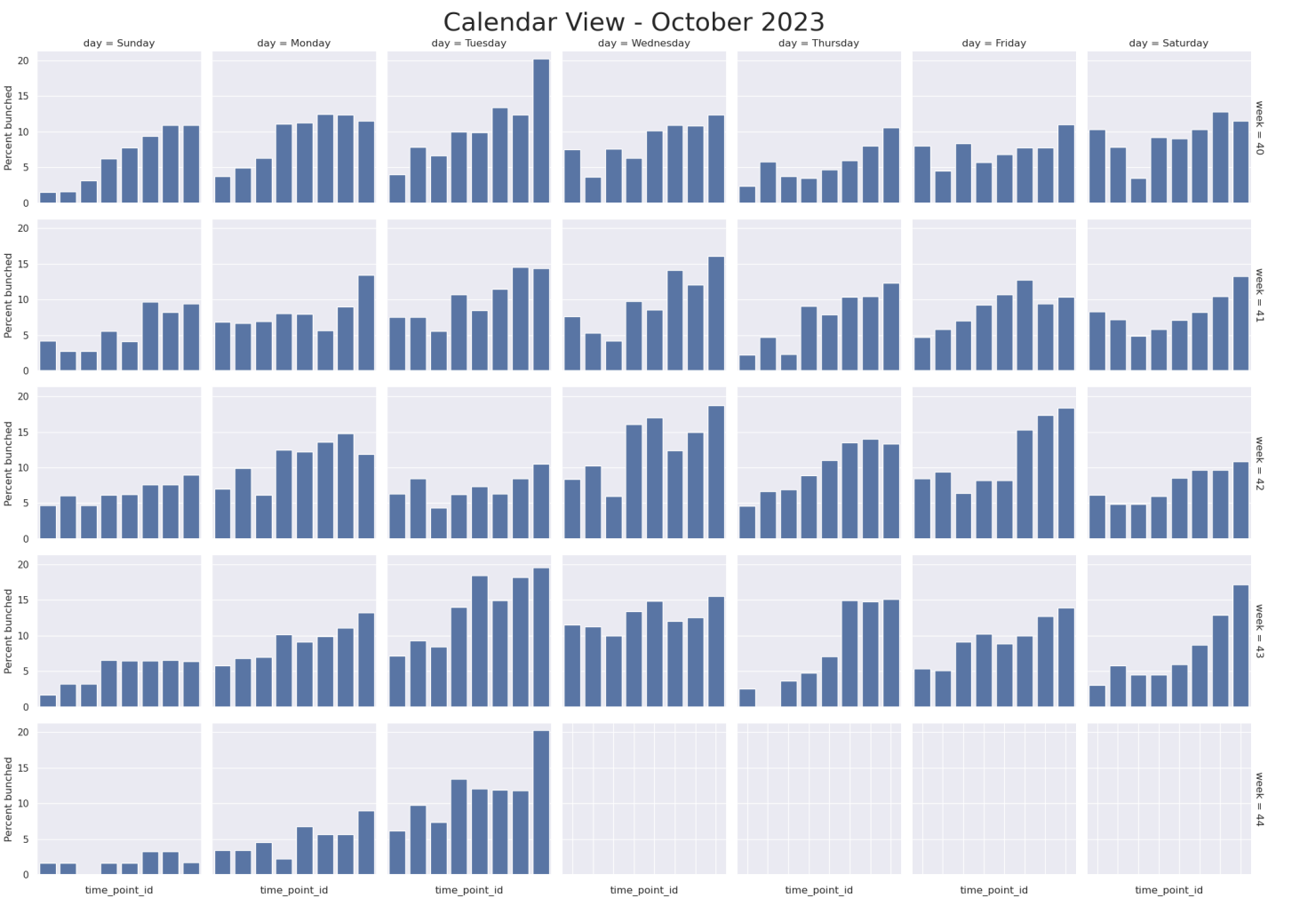
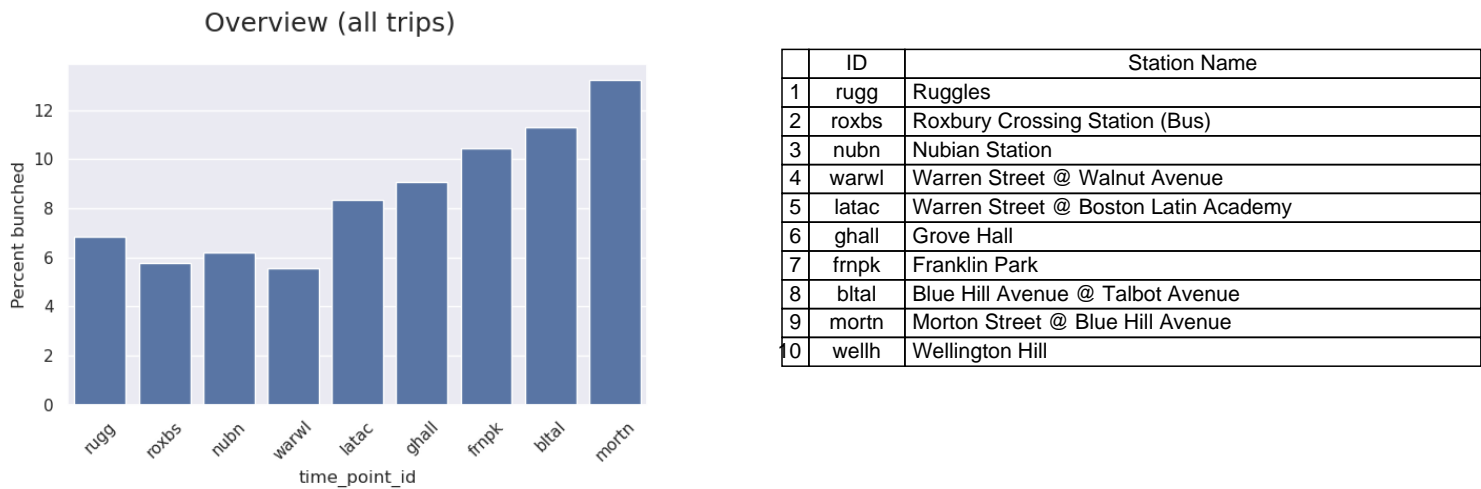
The following charts show bunching events as a percentage of total trips. Here, bunching is defined as headways < 25% of the scheduled\_headway.



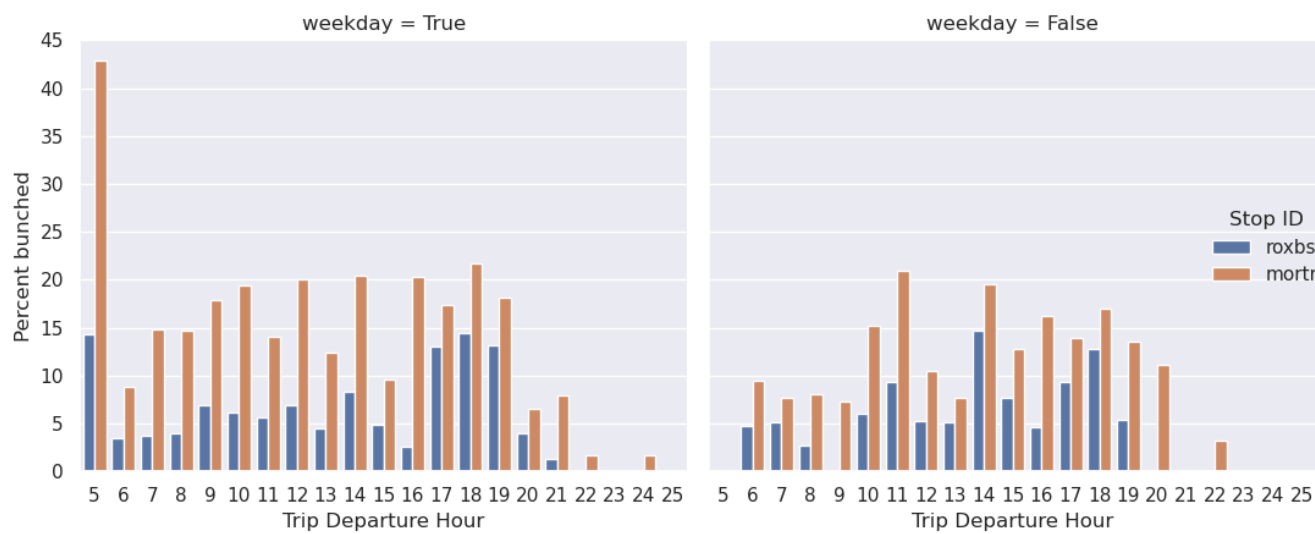
Weekday vs Weekend trips



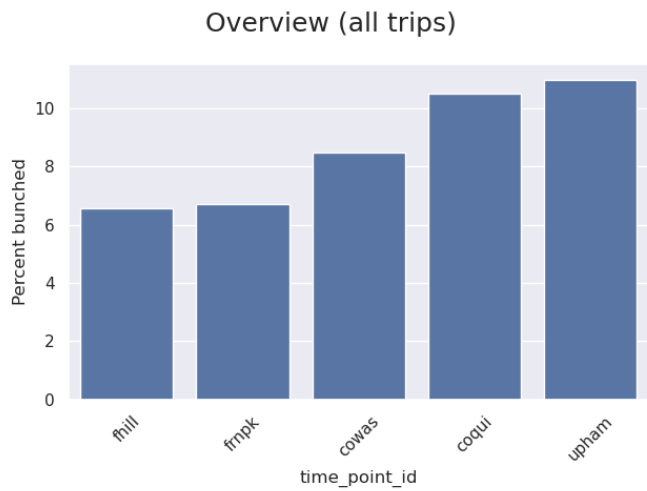
The following charts show bunching events as a percentage of total trips. Here, bunching is defined as headways < 25% of the scheduled\_headway.



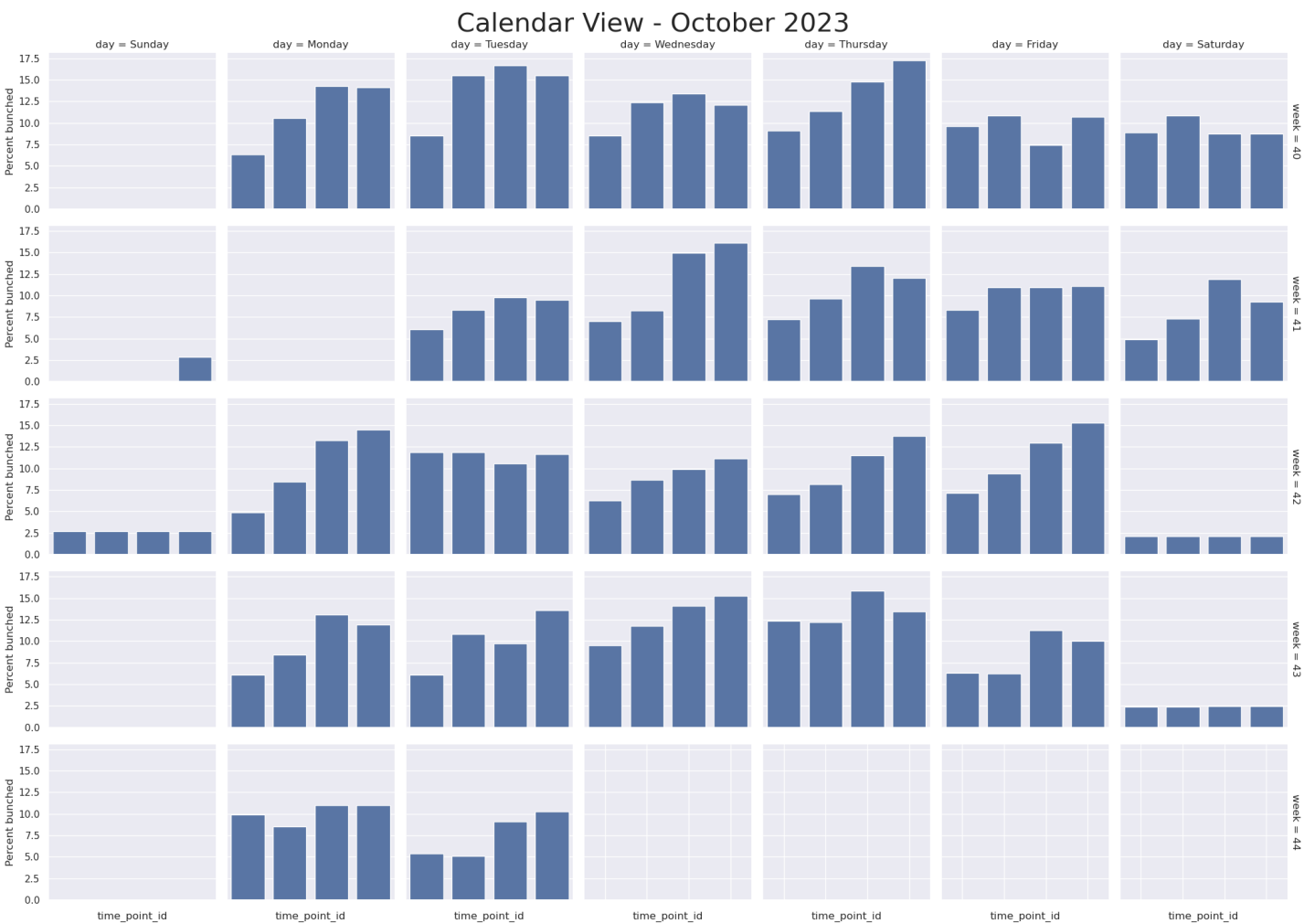
Weekday vs Weekend trips



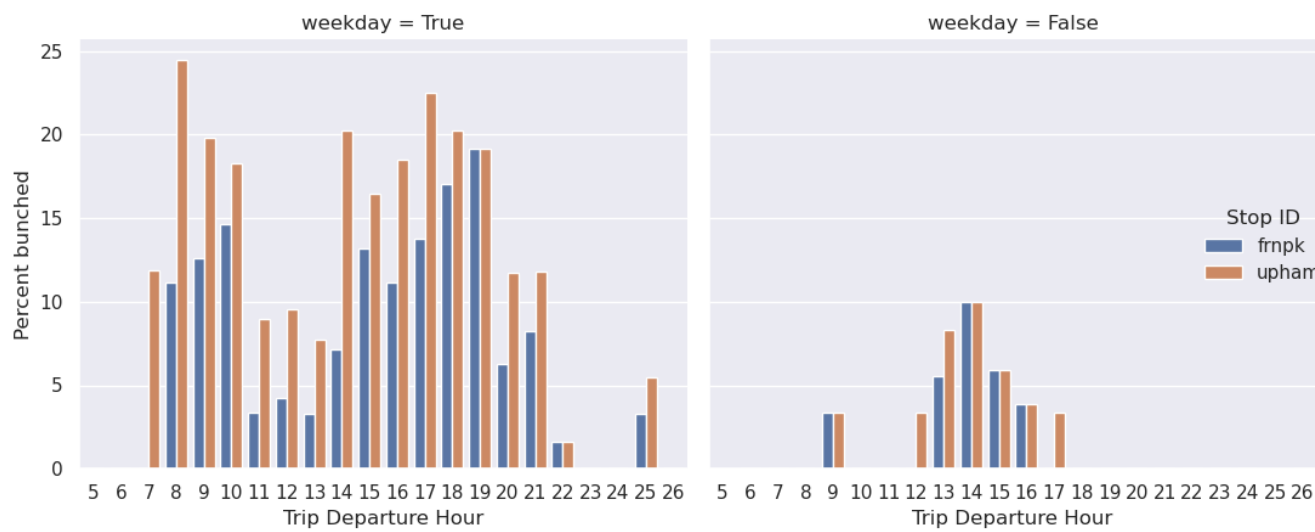
The following charts show bunching events as a percentage of total trips. Here, bunching is defined as headways < 25% of the scheduled\_headway.



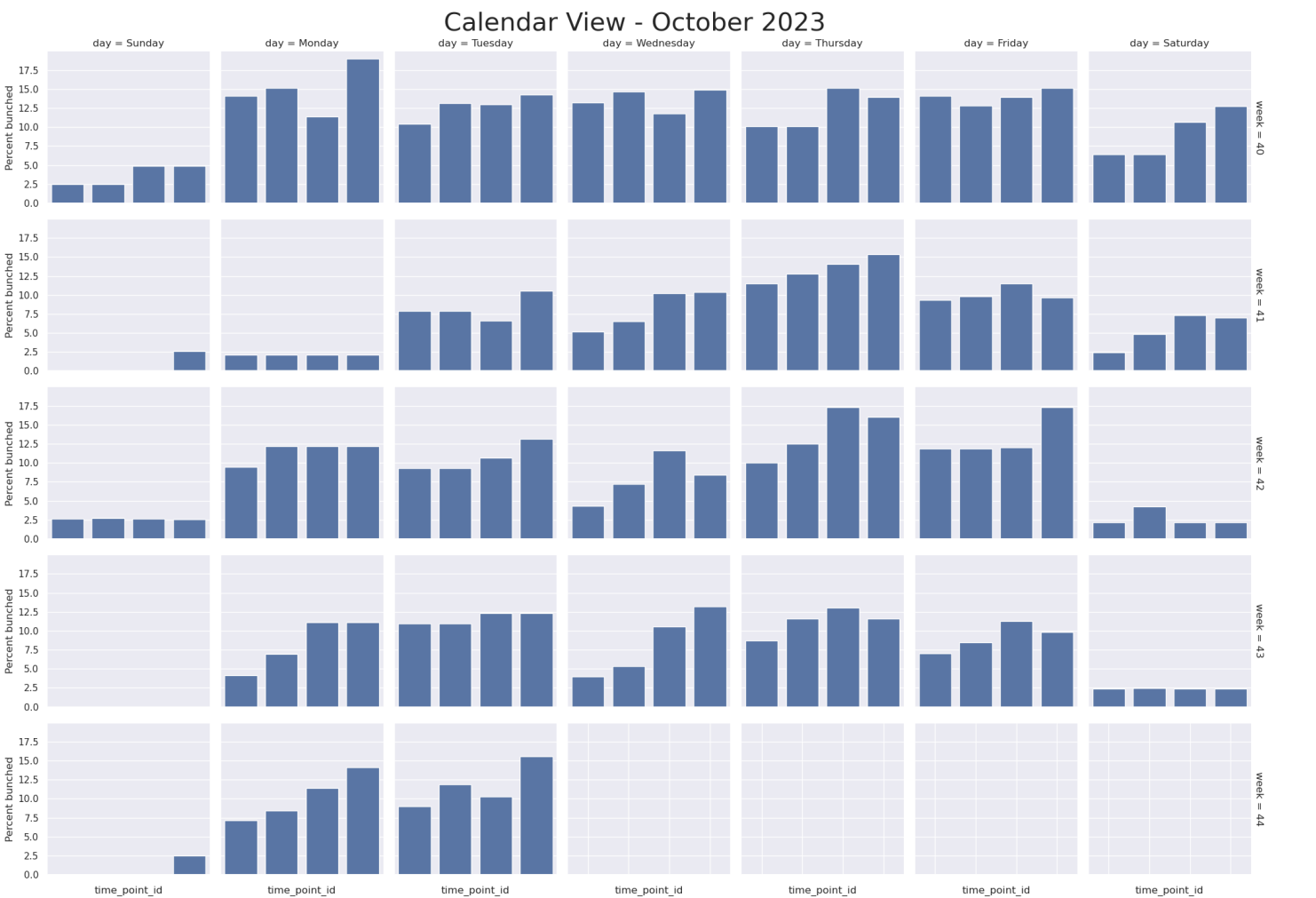
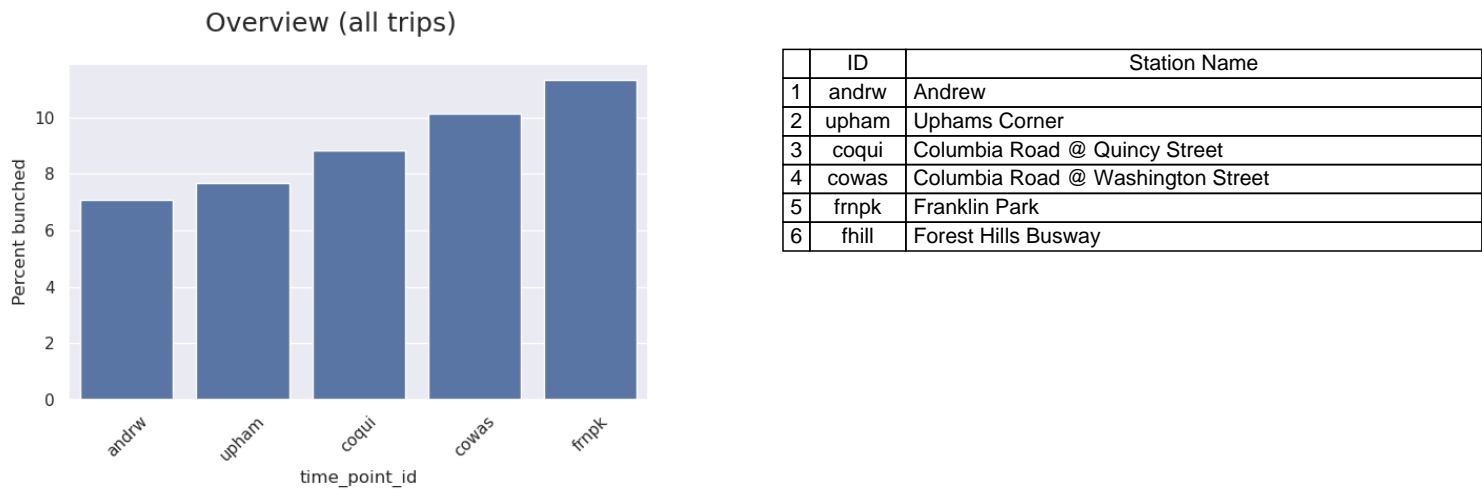
	ID	Station Name
1	fhill	Forest Hills Busway
2	frmpk	Franklin Park
3	cowas	Columbia Road @ Washington Street
4	coqui	Columbia Road @ Quincy Street
5	upham	Uphams Corner
6	andrw	Andrew



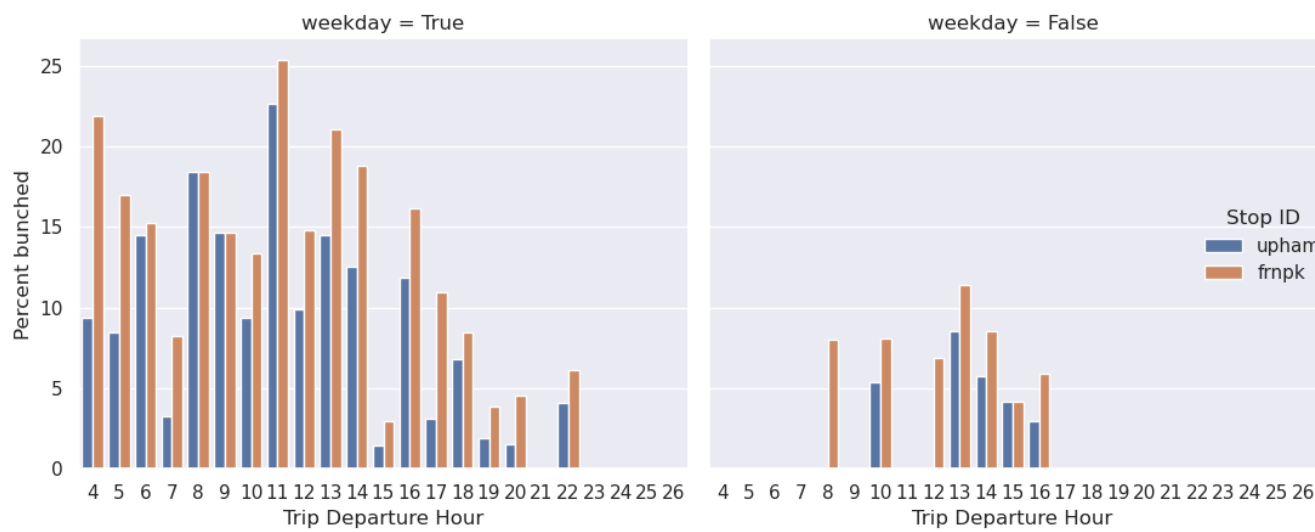
Weekday vs Weekend trips



The following charts show bunching events as a percentage of total trips. Here, bunching is defined as headways < 25% of the scheduled\_headway.

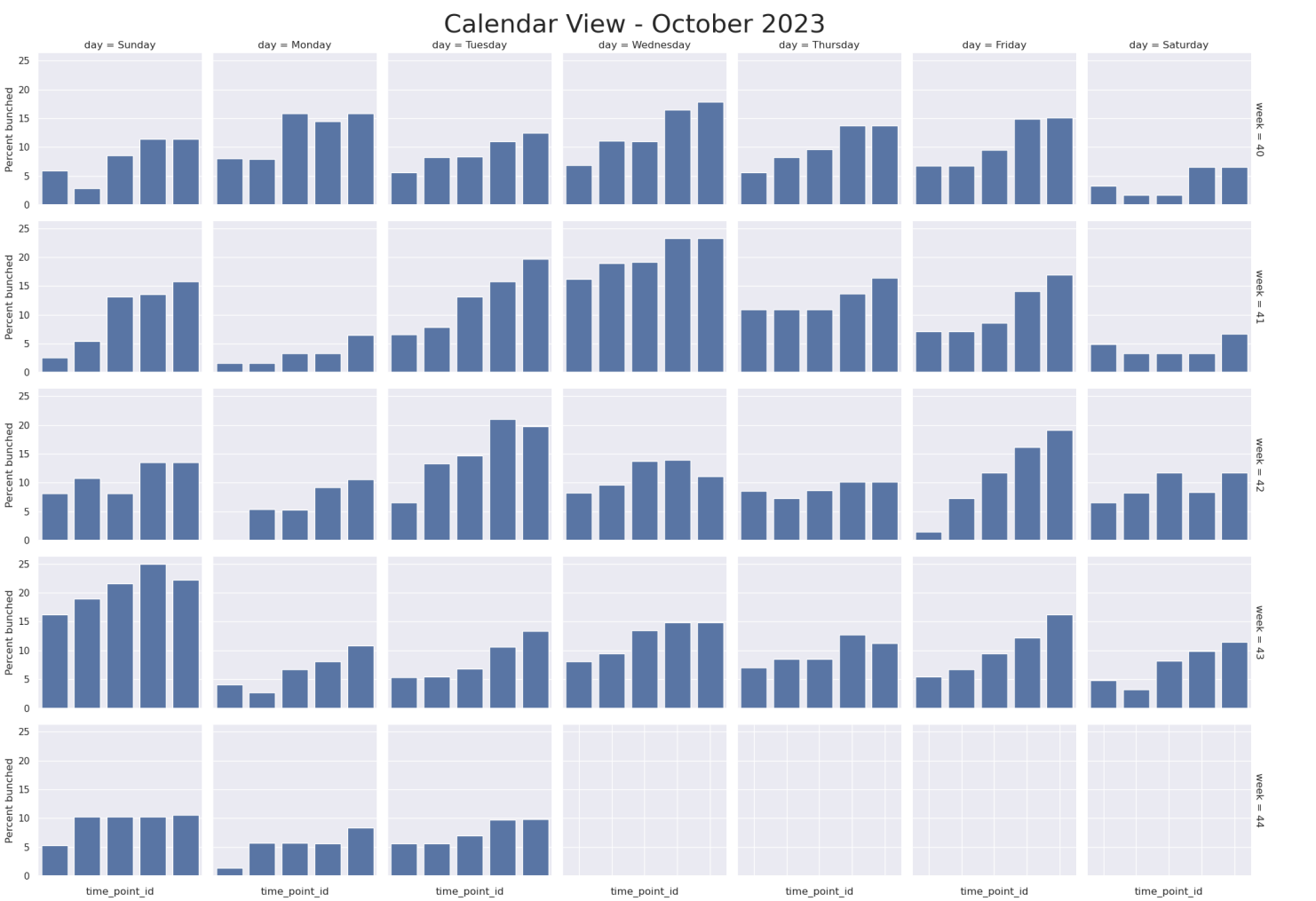
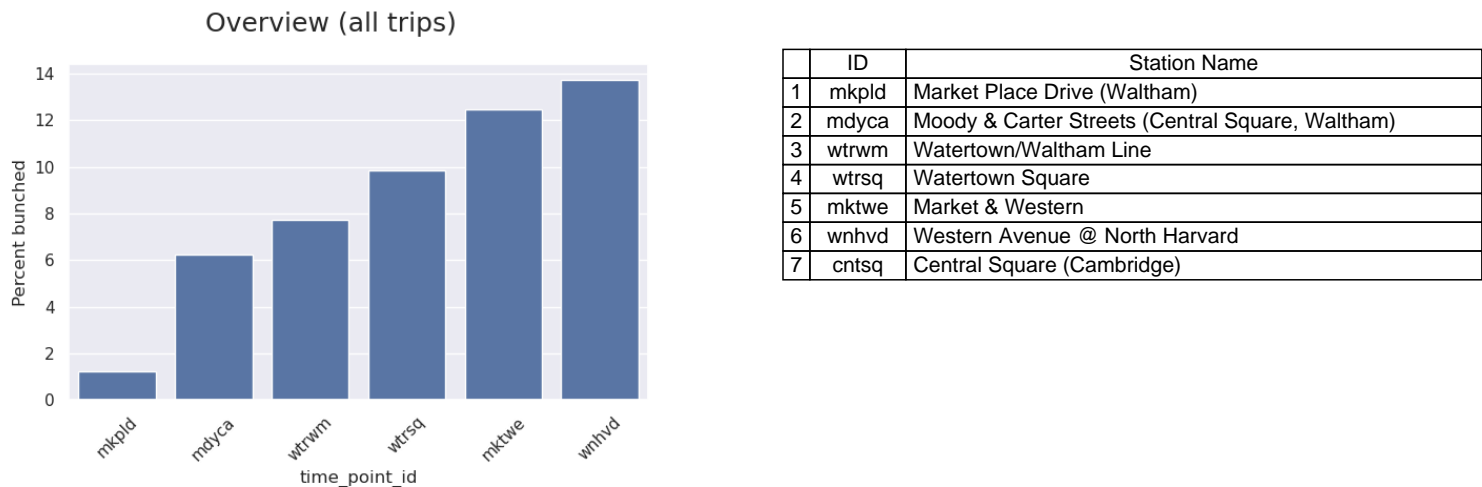


Weekday vs Weekend trips

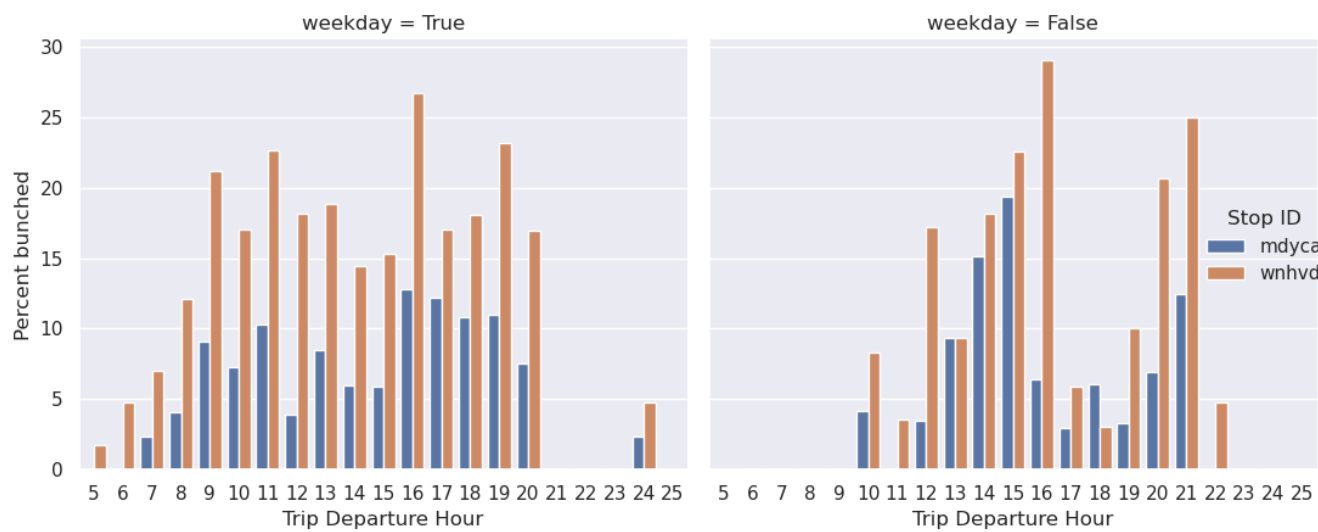




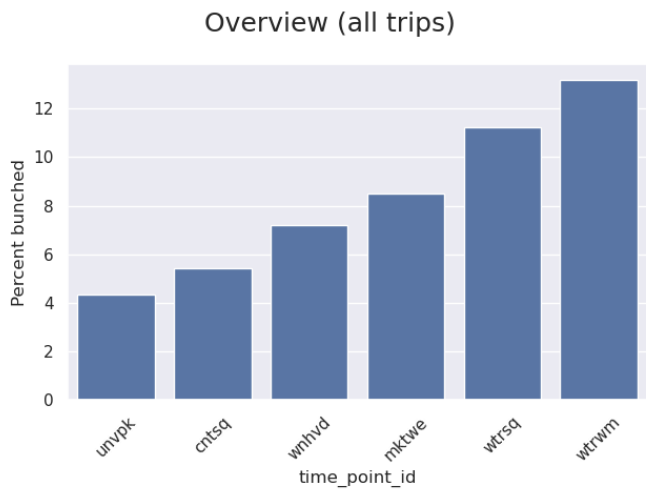
The following charts show bunching events as a percentage of total trips. Here, bunching is defined as headways < 25% of the scheduled\_headway.



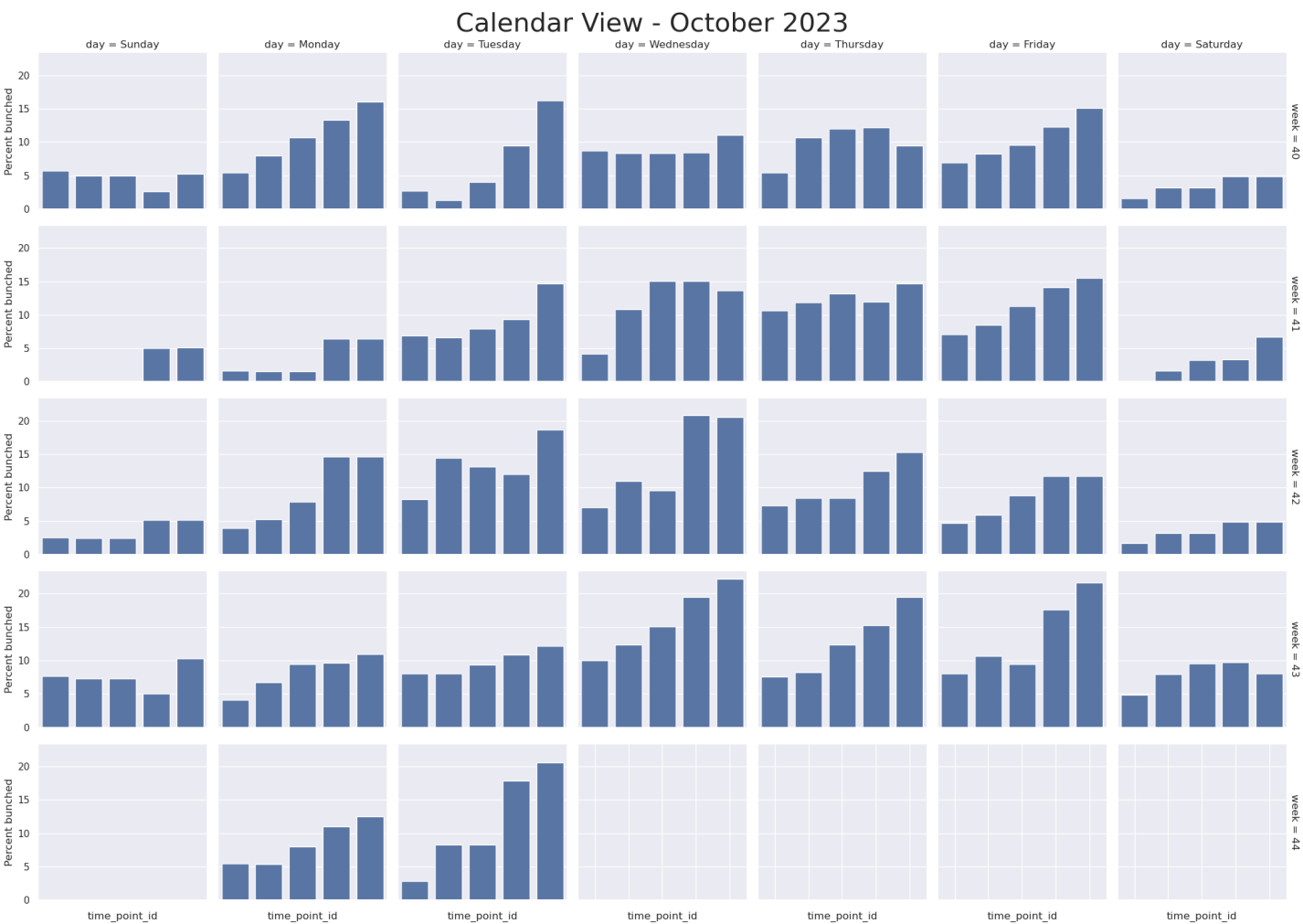
Weekday vs Weekend trips



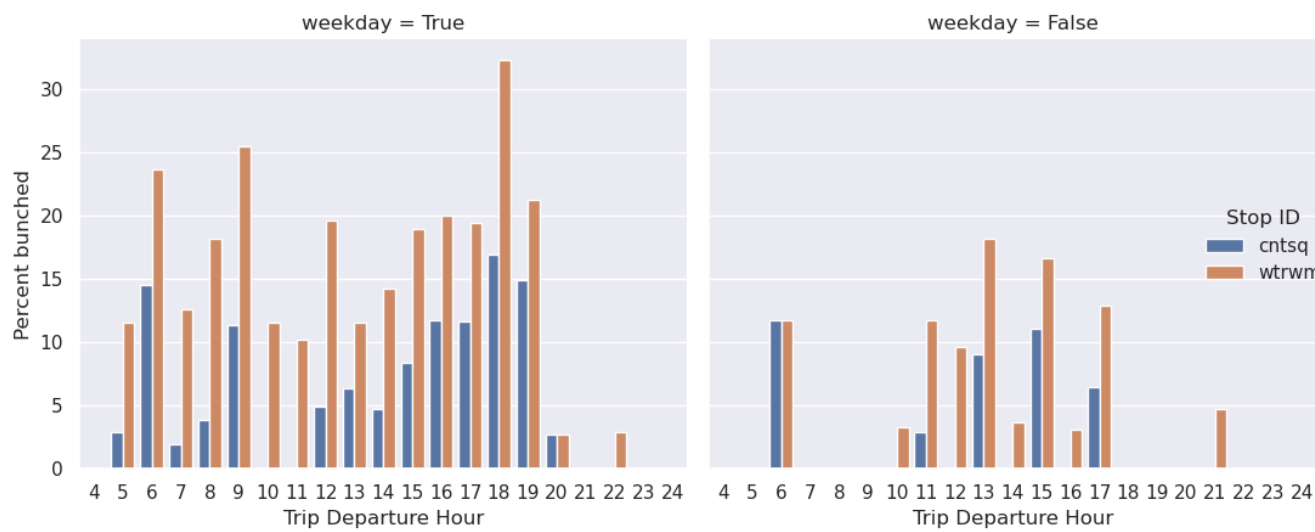
The following charts show bunching events as a percentage of total trips. Here, bunching is defined as headways < 25% of the scheduled\_headway.



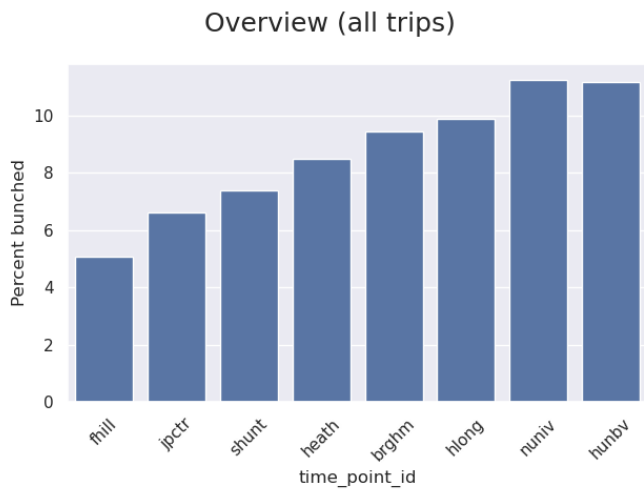
	ID	Station Name
1	unvpk	University Park (Cambridge)
2	cntsq	Central Square (Cambridge)
3	wnhvd	Western Avenue @ North Harvard
4	mktwe	Market & Western
5	wtrsq	Watertown Square
6	wtrwm	Watertown/Waltham Line
7	mdyca	Moody & Carter Streets (Central Square, Waltham)



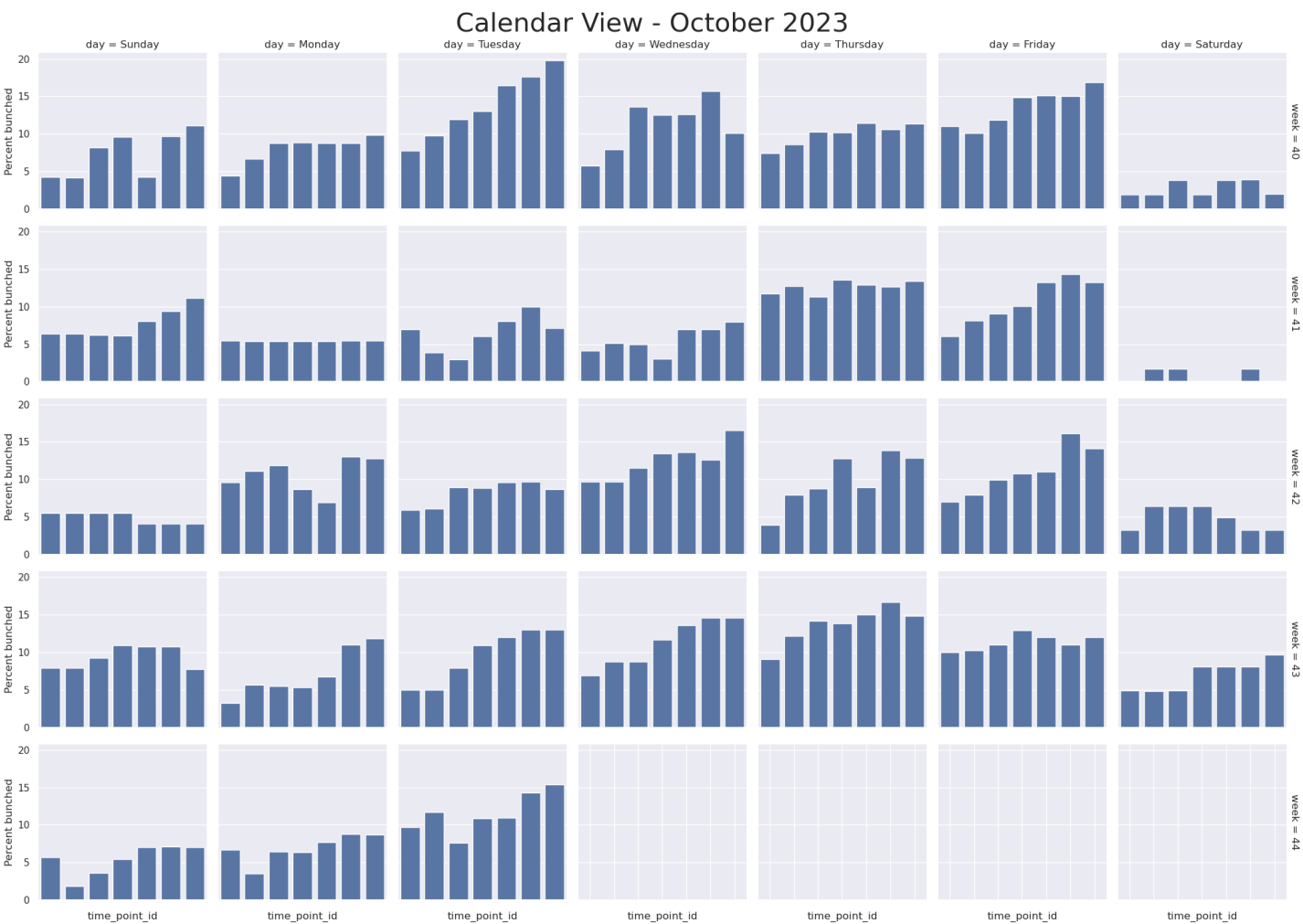
Weekday vs Weekend trips



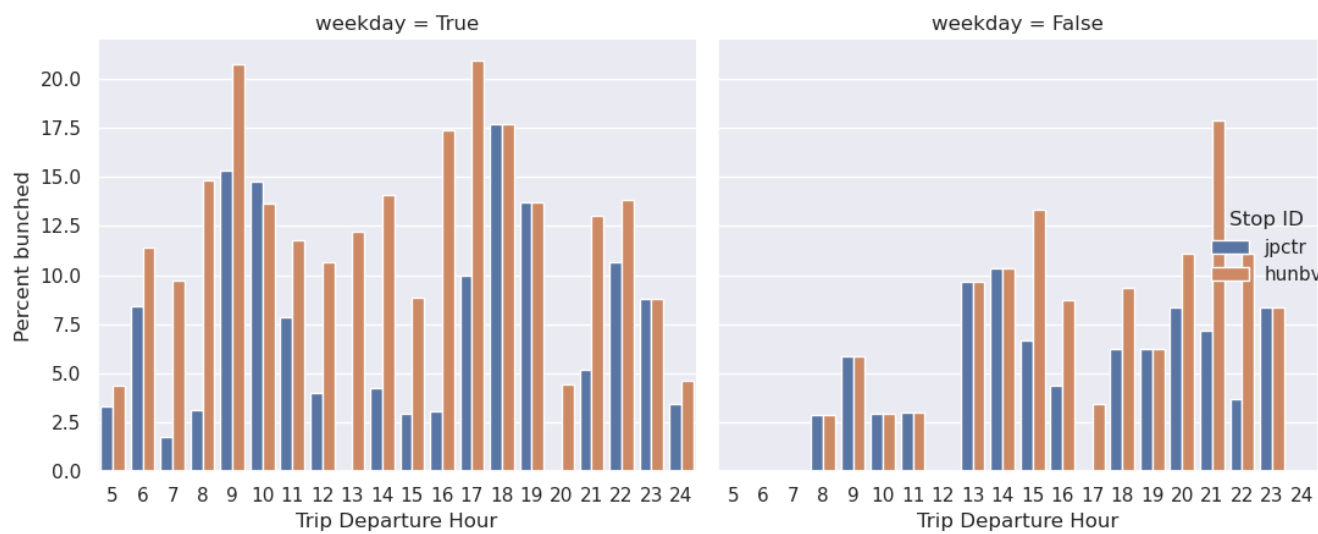
The following charts show bunching events as a percentage of total trips. Here, bunching is defined as headways < 25% of the scheduled\_headway.



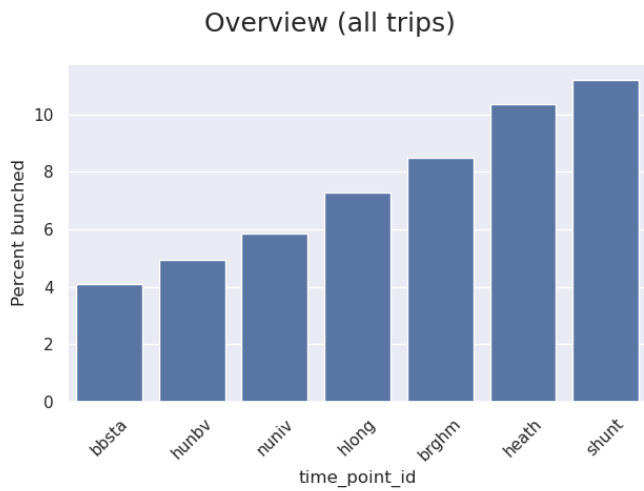
	ID	Station Name
1	fhill	Forest Hills Busway
2	jpctr	Jamaica Plain Center (Monument)
3	shunt	Centre Street & South Huntington Avenue
4	heath	Heath Street Loop
5	brghm	Brigham Circle (Bus)
6	hlong	Huntington Avenue & Longwood Avenue
7	nuniv	Northeastern University
8	hunbv	Huntington Avenue & Belvidere Street
9	copst	Copley (Bus)



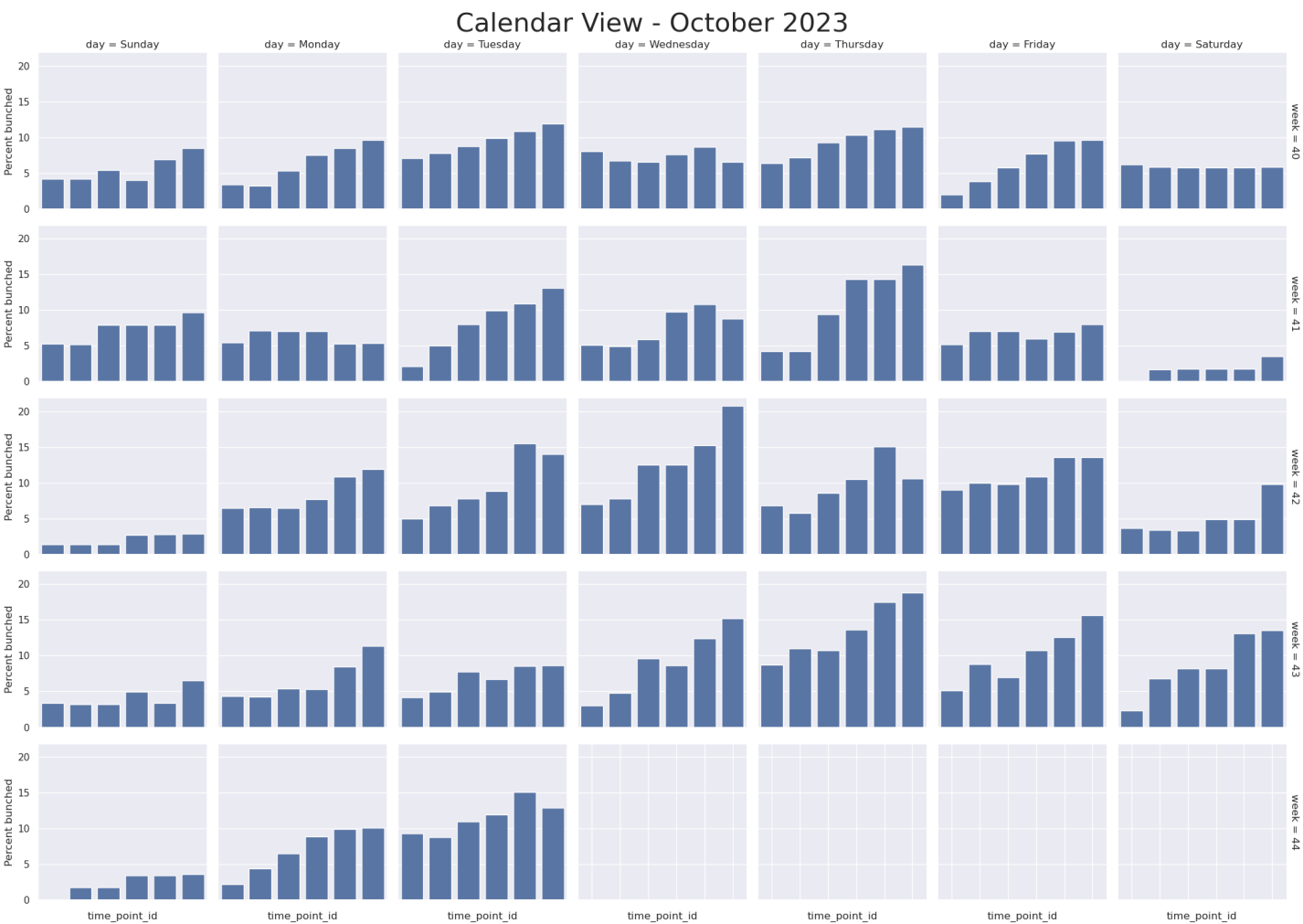
Weekday vs Weekend trips



The following charts show bunching events as a percentage of total trips. Here, bunching is defined as headways < 25% of the scheduled\_headway.



	ID	Station Name
1	bbsta	Back Bay
2	hunbv	Huntington Avenue & Belvidere Street
3	nuniv	Northeastern University
4	hlong	Huntington Avenue & Longwood Avenue
5	brghm	Brigham Circle (Bus)
6	heath	Heath Street Loop
7	shunt	Centre Street & South Huntington Avenue
8	jpctr	Jamaica Plain Center (Monument)



Weekday vs Weekend trips

